



THE CITADEL

Solicitation Number	RFP 24003-JF
Addendum #	1
Date Issued	01/26/2024
Procurement Officer	Jessica Favor, NIGP-CPP, CPPO, CPPB
Phone	843-953-2737
E-Mail Address	procurement@citadel.edu

SOLICITATION TITLE: RFP 24003-JF – Cadet Uniform Apparel and Accessories

TYPE OF ADDENDUM:

- ☒ Change or clarification to the Solicitation's specifications, requirements, or scope of work.
- ☒ Questions posed regarding the Solicitation and their respective answers by The Citadel.
- ☒ Other Change: Appendix A-H updated; **Submit Offers Deadline: February 8, 2023 @ 2 PM**

DESCRIPTION OF CHANGES:

1. Section I. - E Packaging and Shipping on page 12 shall be replaced in its entirety as follows:
 - See Appendix A through H for general packaging requirements.
 - i. Upon award of the contract, Contractor shall submit sample packaging for approval by The Citadel.
 - All boxes shall be labeled with uniform item and quantity by size, if applicable.
2. Section VIII. Bidding Schedule/Business Proposal has been updated and changes are marked in **red ink**.
3. Lot 3 Item 19-22 Patch, OCP Company
 - Quantities ordered each year vary based on the number needed to meet Par Level. Par Level and orders for the 2023-2024 academic year are as follows:

Company	Quantity Ordered	PAR
A	150	200
B	120	200
C	120	200
D	0	200
E	150	200
F	200	200
G	200	200
H	100	200
I	300	200
K	200	200
L	100	200
M	100	200
O	100	200
P	150	200
R	150	200
S	200	200
T	200	200
V	200	200
PB	150	60
BAND	0	60

4. Lot 3 Item 19-25 Patch, OCP Officer Rank

- Quantities ordered each year vary based on the number needed to meet Par Level. Par Level and orders for the 2023-2024 academic year are as follows:

Rank	Quantity Ordered	PAR
COLONEL	4	3
LT COLONEL	48	27
MAJOR	60	78
CAPTAIN	200	219
1ST LT	200	138
2N LT	250	321
RCSM	6	3
BN CSM	10	15
1 SG	60	63
MSG W/THREE ROCKERS	20	60
MSG W/THREE STRAIGHT STRIPES	72	36
SFC	250	201
SSG	378	189
SGT	600	702
CPL	400	879

5. Appendix A through H have been updated and changes are marked in **red ink**. Sections that are **highlighted** include **deletions**.
6. The following patches have been added to Lot 3 Item #19 and are described in Appendix C:
- 19-26 Citadel Eagle Scout Association patch. Estimated annual order: 50.
 - 19-27 Citadel Underwater Rugby patch. Estimated annual order: 25.
 - 19-28 LEAD Scholar patch. Estimated annual order: 75.

RESPONSES TO QUESTIONS RECEIVED BY DEADLINE:

- Do you have the previous award history for this contract that we can see? **No**
- Started my application with the S.C. Division of Small Business to certify as a minority owned business, which should be complete by the bids due date, but there exists a possibility where-in it might not finish until after the bid is submitted and prior to award. If that is the case, should I not check the box on my bid application? **Select No on the form.**
- It was mentioned that we need to submit something for evaluation before we submit a bid. Can you please clarify what is required to be pre-qualified before we submit our bid? **In the pre-proposal meeting, I stated to please register and acquire a vendor number (Vendor Registration) as stated on page 10 of the solicitation.**
- Is there a specific format desired for the Financial Statement? **No specific format is requested.**
- Is the Income statement, balance sheet, and statement of cash flow what is desired? **Yes, these documents will suffice.**
- Does all who attended the meeting need to email you that they were present? **Only if the person wants to be included in an email, otherwise no.**
- Will we get an extension on the time to send in the bid, since the link did not make it to Sayre on 11/2/23? **The proposals are due on February 8, 2024, by 2 PM. This is ample time to submit the requested information on solicitation 24003-JF.**

8. Looks like we may have to Register as a new Vendor, will we have more time for this to come back to us? [No, type application submitted, awaiting approval.](#)
9. Is there a specific form for business proposal or just put in excel spreadsheet? [Modify the form on Section VIII. Select the Lot and add additional lines all of the items that you will submit for award. On the items that you are not submitting for award, mark it "NO Bid."](#)
10. Swords or sashes are not on the current RFP, will there be a separate RFP for these items? [No, these items are not in the current RFP. Yes, once specifications are acquired, a solicitation will be issued.](#)

IMPORTANT NOTICE:

X Contractor is required to acknowledge receipt of this Addendum by signing below and returning a copy with its Offer.

Except as provided herein, all terms and conditions of the Solicitation referenced above remain unchanged and in full force and effect.

SIGNATURE OF PERSON AUTHORIZED TO EXECUTE ON BEHALF OF OFFEROR

Signature: _____

Printed Name & Title: _____

Company Name: _____

Date: _____

Appendix A
Lot 1
PT Uniform
Specifications
Updated January 24, 2024

1. Sweat Pants

- a. Material:** Russell 69609 or equal 50% polyester and 50% cotton. At least 20% cotton required. Fleece lining 9 oz. material.
- b. Style:** Four needle elastic waistband with drawstring. Elastic at bottom of each leg opening.
- c. Color:** Navy Blue (23)
- d. Size:** Small, medium, large, extra-large and double extra-large.
- e. Lettering:** (Placement #18,6" from top of sweat band) On left leg "The Citadel". "The" in straight line with "Citadel" directly under the word "The" centered. 3/4 lettering. Letters are to be non-fading white.
- f. Packing:** Wrapped in plastic six pants per bag or boxes six per box.
- g. Size Marking:** Size label to be attached with thread on inside back of pants.
- h. Stitching:** Chain lock stitching all seams or cover stitched seams.
- i. Tag:** Hangtag with SKU and size attached to the waistband of pants.



2. Sweatshirts

- a. Material:** Russell 69509 or equal 50% polyester, 50% cotton. At least 20% cotton required. Fleece lining. 9 oz material.
- b. Style:** Crewneck
- c. Color:** Navy Blue (23)
- d. Stitching:** Chain lock stitching all seams or cover stitched seams.
- e. Sizes:** Small, medium, large, extra-large and double extra-large.
- f. Lettering:** “The Citadel” is to be stenciled on the front of the shirts. “The” is a straight line in 2” letters. “Citadel” is directly under “The” in 2-3/4” letters. Letters are to be non-fading white.
- g. Size Marking:** Size label to be attached with thread on inside back of neck.
- h. Packing:** Wrapped in plastic, six shirts per bag or boxes size per box. Optional four per poly bag.
- i. Tag:** Hangtag with SKU and size attached at neck.



3. Warm Up Jacket

- a. Manufacturer:** TONIX
- b. Material:** 100% Shell Polyester Body Lining; 100% Polyester Sleeve Lining; 100% Nylon.
- c. Color:** Navy Blue
- d. Lettering:** “The Citadel” is to be embroidered on the left chest.
Letters are to be non-fading white.
- e. Sizes:** Small, medium, large, extra-large, double extra-large, and triple extra-large.
- f. Size Marking:** Size label to be attached with thread on inside back of neck.
- g. Packing:** Individually packaged with size and SKU on the outside.



4. Warm Up Pants

- a. Manufacturer:** TONIX
- b. Material:** 100% Shell Polyester Upper Pant Lining; 100% Polyester Lower Pant Lining; 100% Nylon.
- c. Color:** Navy Blue
- d. Sizes:** Small, medium, large, extra-large, double extra-large, and triple extra-large.
- d. Size**
- Marking:** Size label to be attached with thread on inside back of waist.
- h. Packing:** Individually packaged with size and SKU on the outside.



5. Shirts, Tee, Citadel

- a. Material:** 100% poly smooth knit.
- b. Manufacturer:** Green Co. Style 1440 TRT MENS S/S Tee
- b. Style:** Short sleeve crew neck tee shirts, with 3/4" white block lettering.
- c. Color:** Shirt Navy Blue
- d. Front Lettering:** White lettering on left chest "THE CITADEL" 2-1/2 Inches below bottom of collar to be made with a Non-fading dye..
- e. Back:** The Citadel's Advising logo with White and Gold PMS 124.
- | | <u>Chest size</u> |
|------------------------|-------------------|
| f. Sizes: Small | 34 - 36 |
| Medium | 38 - 40 |
| Large | 42 - 44 |
| X-Large | 45 - 46 |
| XX-Large | 47 - 48 |
| XXX-Large | 49 - 50 |
| XXXX-Large | 51 - 52 |
- g. Packing:** Four shirts per size sealed in poly bags with size and SKU marked on the bag.
- i. Tag:** Hangtag with SKU and size attached at neck.



6. Shirts, Tee, Citadel, Long Sleeve

- a. Manufacturer:** Badger Sport
- b. Material:** 100% polyester microfiber.
- c. Style:** Long sleeve crew neck with 3/4" block lettering.
- d. Color:** Shirt Navy Blue
- e. Front Lettering:** White lettering on left chest "THE CITADEL" 2-1/2 Inches below bottom of collar to be made with a Non-fading dye.
- f. Back:** The Citadel's Advising logo with White and Gold PMS 124.
- g. Size:** Chest Size
- | | |
|------------|-------|
| Small | 34-36 |
| Medium | 38-40 |
| Large | 42-44 |
| X-Large | 45-46 |
| XX-Large | 47-48 |
| XXX-Large | 49-50 |
| XXXX-Large | 51-52 |
- h. Packing:** Three shirts per size sealed in poly bags with size and SKU marked on the bag.
- i. Tag:** Hangtag with SKU and size attached at neck.



7. Short, Gym (Male)

a. Material: 100% poly interlock – 2 ply. Fabric content 2.8 oz (95 grams).

b. Style No side seam. No pocket. Double ply.

c. Sizes Measurement Chart (insert below)

Measurements	TOL +/-	S	M	L	XL	2XL	3XL
A. Side seam	+/- 1/2	18 1/2	19	19 1/2	20	20 1/2	21
B. Back Seam.	+/- 1/2	17 1/4	17 3/4	18 1/4	18 3/4	19 1/4	19 3/4
C. Front Seam	+/- 1/2	13 1/2	14	14 1/2	15	15 1/2	16
D. Leg Opening	+/- 1	12 1/2	13 1/2	14 1/2	15 1/2	16 1/2	17 1/2
E. Waistband Relaxed	+/- 1	12 1/2	13 3/4	14 3/4	15 3/4	16 3/4	17 3/4
Extended	+/- 2	21	23	25	27	29	31
F. Inseam	+/- 1/2	6 1/4	6 1/4	6 1/4	6 1/4	6 1/4	7 1/4
G. Seat	+/- 1	23	25	27	29	31	33
H. Thigh	+/- 3/4	13 1/2	14 1/2	15 1/2	16 1/2	17 1/2	18 1/2

e. Measuring Guidelines (insert below)

Measuring Guidelines

A. Side seam – Top of waistband to bottom of the leg.

B. Back seam – Top of waistband to crotch.

C. Front seam – Top of waistband to crotch.

D. Leg Opening – Relaxed across bottom.

E. Waistband – Relaxed across top.

F. Inseam – Crotch to Bottom of the leg.

G. Seat – Measures 3" up from Crotch, across short side to side

H. Thigh – 1" below crotch, measure across leg panel to waist from fold to fold.

f. Color: Navy Blue

g. Packing: Four pairs shorts per size sealed in poly bags with size and SKU marked on the bag. One dozen per box. Per size.

i. Tag: Hangtag with SKU attached at waistband.



8. Short, Gym (Female)

a. Material: 100% poly interlock – 2 ply. Fabric content 2.8 oz (95 grams).

b. Manufacturer: Green Co. Style TR7530 Ladies Short

c. Style No side seam. No pocket. Double ply.

d. Sizes Measurement Chart (insert below)

Measurements	TOL +/-	S	M	L	XL	2XL	3XL
A. Side seam	+/- 1/2	15 1/2	16	16 1/2	17 1/2		
B. Back Seam	+/- 1/2	13	13 1/2	14 1/4	15		
C. Front Seam	+/- 1/2	10 1/2	11	12	13		
D. Leo Opening	+/- 1	11 1/2	12	13	14		
E. Waistband Relaxed	+/- 1	11	12	13	14		
Extended	+/- 2	19	20	22	24		
F. Inseam	+/- 1/2	5 1/2	5 1/2	5 1/2	5 1/2		
G. Seat	+/- 1	22	23	25	27		
H. Thigh	+/- 3/4	12	13	14	15		

d. Measuring Guidelines (insert below)

Measuring Guidelines:

A. Side seam - Top of waistband to bottom of the leg.

B. Back seam - Top of waistband to crotch.

C. Front seam - Top of waistband to crotch.

D. Leg Opening - Relaxed across bottom.

E. Waistband - Relaxed across top.

F. Inseam - Crotch to Bottom of the leg.

G. Seat - Measures 3" up from Crotch, across short side to side

H. Thigh - 1" below crotch, measure across leg panel to waist from fold to fold.

e. Color: Navy Blue

f. Packing: Four pairs shorts per size sealed in poly bags with size and SKU marked on the bag. One dozen per box. Per size.

i. Tag: Hangtag with SKU attached at waistband.



9. Cap Knit, Citadel

- a. Style:** 1525 DE design #8591 knit pullover with “The Citadel” embroidered on front panel in white letters. “The” 1/2” “Citadel” 3/4” lettering.
- b. Material:** 100% Acrylic
- c. Color:** Navy
- d. Size:** One size fits all
- e. Packing:** **Individually packaged with SKU on outside.** One dozen per box



10. Cap, Baseball

- a. Style:** Navy blue twill 100% cotton with The Citadel in white letters on front (style 590DE0) embroidered.
- b. Tag:** **Sticker with SKU attached inside the brim of the hat.**



11. Poncho/Rain Cape

- a. Manufacturer:** SP DK NY-STADIUM PACKABLE PONCHO ITEM# BRTT71
- b. Color:** Sport Dark Navy.
- c. Description:** Cape style with hat; two snaps at collar.
- d. Size:** One size fits all.
- e. Packing:** Each raincoat shall be folded and individually packaged **with SKU on outside.**



12. Shirt, Military Tee

- a. Style:** M280-3 lightweight crewneck military t-shirt. Reinforced double-stitch neck.
- b. Material:** 50% cotton, 50% polyester
- c. Color:** Tan
- d. Size:** Small (34-36 chest size), medium (38-40 chest size), large (42-44 chest size), extra-large (46-48 chest size), and double extra-large (50-52 chest size).
- e. Packing:** Three each per poly bag **with size and SKU on outside of bag**. 24 packs per case.



Appendix B
Lot 2
Military Apparel
Updated January 24, 2024

Description-

Designed for hot weather conditions, the OCP Army Combat Uniform Shirt is made from 5.5 oz. NYCO Extreme, 57/43 nylon/cotton ripstop material. Designed to be cooler and breathe better than the standard-issue combat uniform. Constructed from CORDURA® NYCO Extreme Rip-Stop that is 17% lighter while displaying 3x higher tearing strength, 10x breathability and drying 35% faster than US Mil-Spec MIL-DTL-44436B NYCO fabric. Uniforms in the fabric are currently selected and fielded as the US Army Improved Hot Weather Combat Uniform.

Size Info-

X-Small through X-Large = Short Length

X-Small through 3X-Large = Regular Length

X-Small through 2x-Large = Long Length

Stock colors- Scorpion OCP

Features-

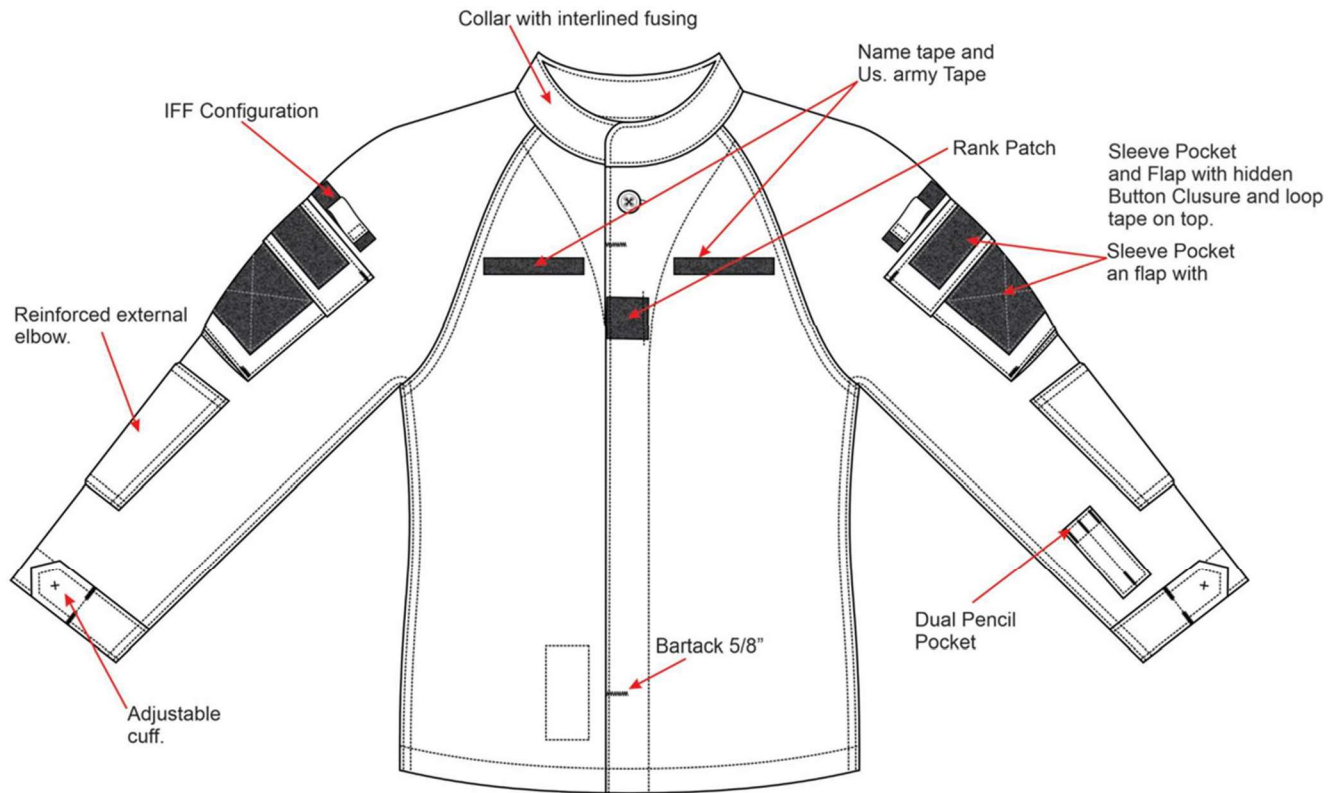
- CORDURA® NYCO Extreme 5.0-6.0 oz. main body wrinkle-free finish fabric
- Fold-down collar with fusible interlining
- Single-breasted, 6-button concealed front pocket
- Front placket with loop tape for rank patch
- Front loop tape to accommodate Name and US Army Tape
- 2- bellow style top opening upper sleeve pockets with drain-holes
- 'Friend or Foe' Identification tab on sleeves with hook and loop closure
- IFF tab cover on the sleeve above the upper sleeve pocket
- 330D CORDURA® MIL-DTL-32439 Type IV nylon reinforced elbow patches
- Button cuff sleeve closure with 3-button hole positions
- 2-channel pencil pocket on the left sleeve

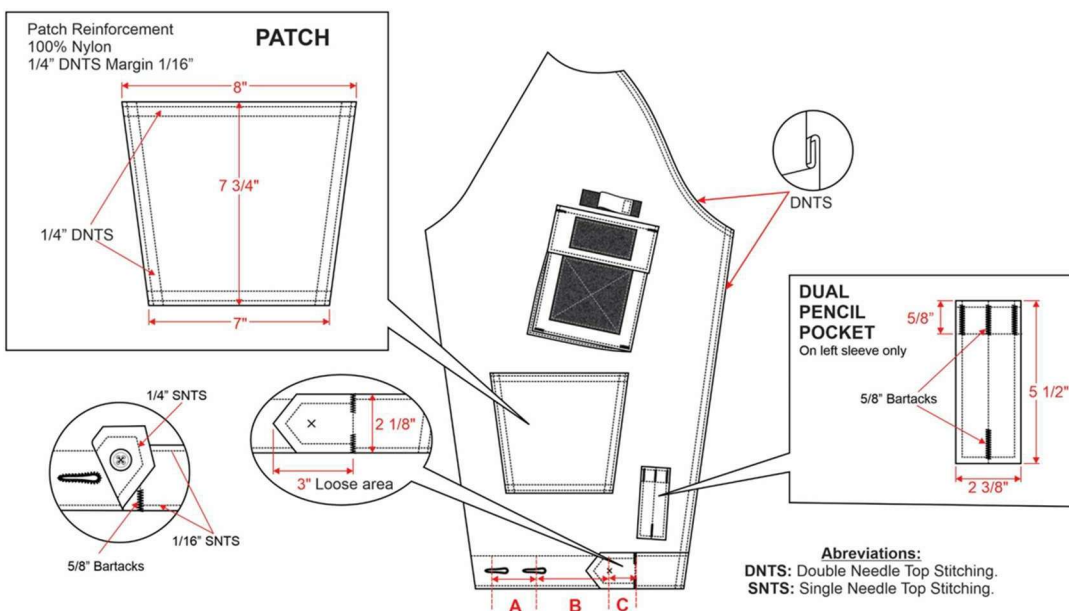
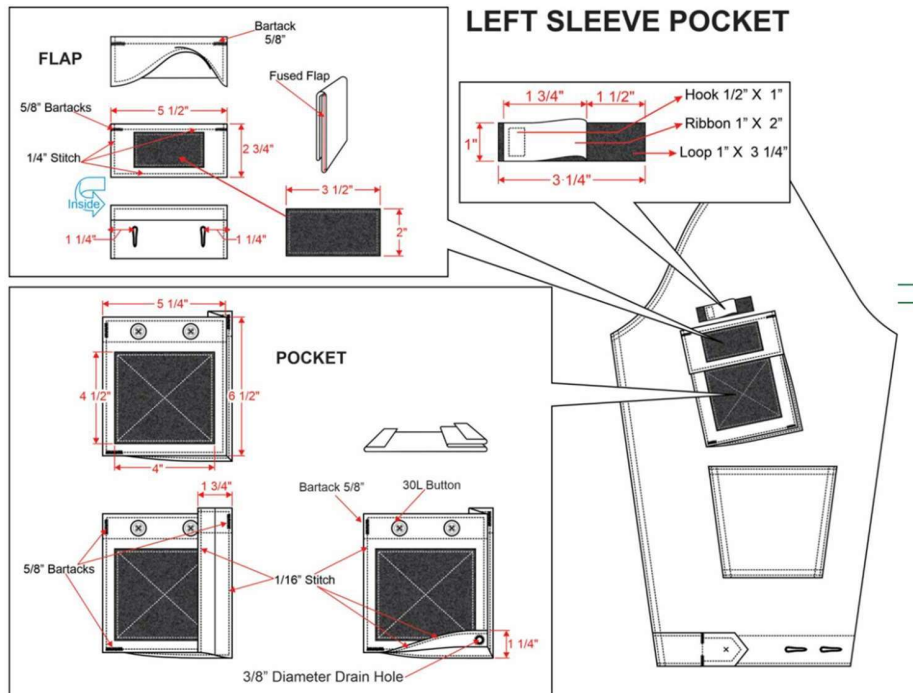


FINISHED MEASUREMENTS									
POM	DESCRIPTION	Tol +/-	XS	S	M	L	XL	2XL	3XL
1	BACK LENGTH- FROM CB/ XX-SHORT LENGTH	1/2	25 1/2	26	26 1/2	27	27 1/2	28	28 1/2
	BACK LENGTH- FROM CB/ X-SHORT LENGTH		26 1/2	27	27 1/2	28	28 1/2	29	29 1/2
	BACK LENGTH- FROM CB/ SHORT LENGTH		27 1/2	28	28 1/2	29	29 1/2	30	30 1/2
	BACK LENGTH- FROM CB / REGULAR LENGTH		29	29 1/2	30	30 1/2	31	31 1/2	32
	BACK LENGTH- FROM CB / LONG LENGTH		30 3/8	30 7/8	31 3/8	31 7/8	32 3/8	32 7/8	33 3/8
	BACK LENGTH- FROM CB / X- LONG LENGTH		31 3/4	32 1/4	32 3/4	33 1/4	33 3/4	34 1/4	34 3/4
	BACK LENGTH- FROM CB / XX- LONG LENGTH				34 1/8	34 5/8	35 1/8	35 5/8	36 1/8
2	HALF CHEST -AT ARM PIT	1/2	19 1/8	21 1/8	23 1/8	25 1/8	27 1/8	29 1/8	31 1/8
3	SLEEVE LENGTH - INSEAM/ XX- SHORT LENGTH	3/4	19	19 1/4	19 1/2	19 3/4	20	20 1/4	20 1/2
	SLEEVE LENGTH - INSEAM/ X- SHORT LENGTH		20	20 1/4	20 1/2	20 3/4	21	21 1/4	21 1/2
	SLEEVE LENGTH - INSEAM/ SHORT LENGTH		21	21 1/4	21 1/2	21 3/4	22	22 1/4	22 1/2
	SLEEVE LENGTH - INSEAM/ REGULAR LENGTH		22	22 1/4	22 1/2	22 3/4	23	23 1/4	23 1/2
	SLEEVE LENGTH - INSEAM/ LONG LENGTH		23	23 1/4	23 1/2	23 3/4	24	24 1/4	24 1/2
	SLEEVE LENGTH - INSEAM/ X- LONG LENGTH		24	24 1/4	24 1/2	24 3/4	25	25 1/4	25 1/2
	SLEEVE LENGTH - INSEAM/ XX- LONG LENGTH				25 1/2	25 3/4	26	26 1/4	26 1/2
4	1/2 SLEEVE OPENING	1/4	6 1/4	6 1/2	6 3/4	7	7 1/4	7 1/2	7 3/4
5	1/2 SWEEP	1/2	20 1/8	22 1/8	24 1/8	26 1/8	28 1/8	30 1/8	32 1/8
6	1/2 COLLAR CIRCUMFERENCE	1/2	8 1/2	9	9 1/2	10	10 1/2	11	11 1/2

Standard	Requirement
Fiber Composition AATCC 20A	57% Nylon, 43% Cotton
Fabric Weight ASTM D3776	5.5 oz/yd2 ± 3%
Dimentional Stability to Laundry AATCC 135	Less than 3% Warp and Weft
Tear Strength ASTM D1424-83	>10lbs. Warp and Weft
Colorfastness to Washing AATCC 61-2A	Equal to or Greater than 4 rating
Colorfastness to Perspiration AATCC 15	Equal to or Greater than 4 rating
Colorfastness to Crocking AATCC 8	Equal to or Greater than 4 rating
Tensile Strength ASTM D5034-95	Warp > 150 lbs., Weft > 175 lbs.

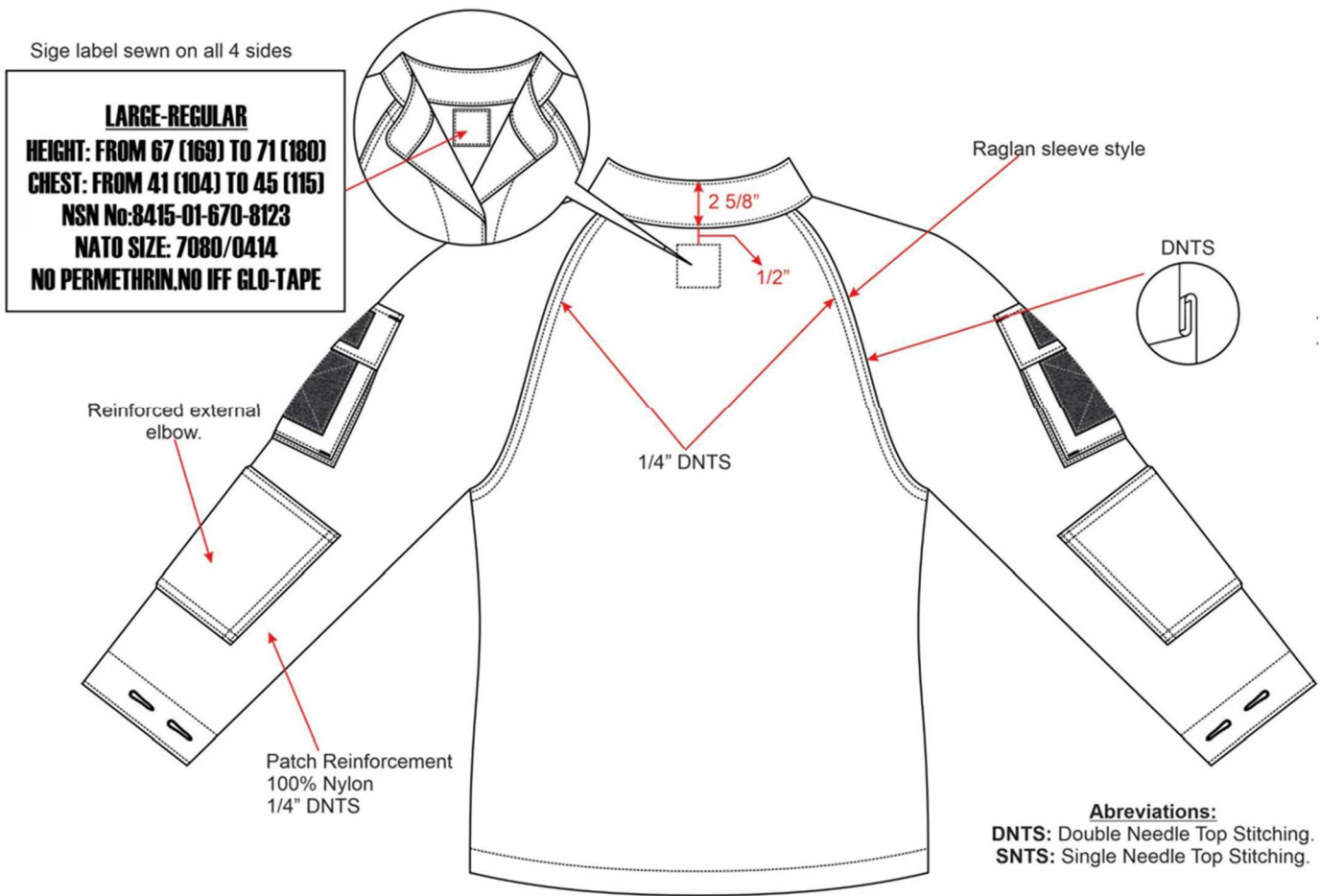
FRONT VIEW





Dimensions Buttonhole			
Size	A	B	C
XS	2 1/2	2	2
S	2 1/2	3 3/4	1 3/4
M-XL	2 1/2	4	2
2XL-3XL	2 1/2	4 1/4	2

BACK VIEW



Tag: Hangtag with size and SKU attached at neck.

Packaging: Individually packaged with size and SKU on outside. Packaged thirty per box with the size on the outside of the box.

Description

The TRU-SPEC® Hot Weather Scorpion OCP Combat Uniform is designed to allow the wearer a cooler uniform in extremely hot environments. Designed to be cooler and breathe better than the standard-issue combat uniform.

Constructed from CORDURA® NYCO Extreme Rip-Stop that is 17% lighter while displaying 3x higher tearing strength, 10x breathability and drying 35% faster than US Mil-Spec MIL-DTL-44436B NYCO fabric. Uniforms in the fabric are currently selected and fielded as the US Army Improved Hot Weather Combat Uniform.

Size Info-

X-Small through X-Large = Short Length

X-Small through 3X-Large = Regular Length X-

Small through 2X-Large = Long Length

Stock colors- Scorpion OCP

Features-

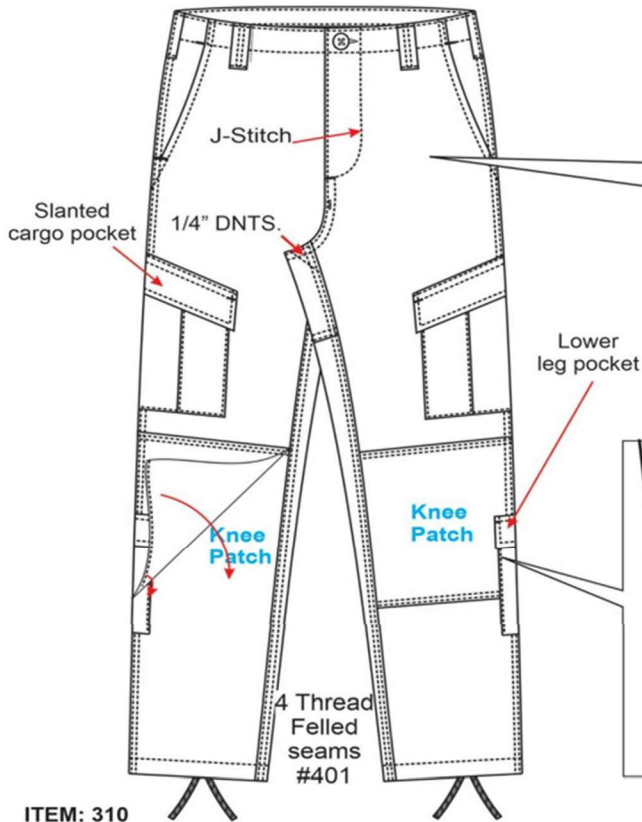
- Waistband with a traditional 4-button fly
- 7-belt loops for added support
- 2-pleated side cargo pockets with button closure and hidden drain holes
- 2-back pockets with snag proof button closure
- 330D CORDURA® MIL-DTL-32439 Type IV nylon reinforced seat and knees
- Internal anti-chafing knit fabric at the knee for added comfort
- 2-lower leg pockets with button closure and drain holes
- “Stay tied” heavy nylon drawstring leg ties



FINISHED MEASUREMENTS												
POM	DESCRIPTION	Tol +/-	XS	S	M	L	XL	2XL	3XL	4XL	5XL	6XL
1	WAIST	+ 1 - 1/2	27 1/2	31 1/2	35 1/2	39 1/2	43 1/2	47 1/2	51 1/2	55 1/2	59 1/2	63 1/2
2	FRONT RISE (X-SHORT SIZE)	1/2	10 1/2	11	11 1/2	12	12 1/2	13	13 1/2	14	14 1/2	15
	FRONT RISE (SHORT SIZE)	1/2	11	11 1/2	12	12 1/2	13	13 1/2	14	14 1/2	15	15 1/2
	FRONT RISE (REGULAR SIZE)	1/2	11 1/2	12	12 1/2	13	13 1/2	14	14 1/2	15	15 1/2	16
	FRONT RISE (LONG SIZE)	1/2	12	12 1/2	13	13 1/2	14	14 1/2	15	15 1/2	16	16 1/2
	FRONT RISE (X-LONG SIZE)	1/2	12 1/2	13	13 1/2	14	14 1/2	15	15 1/2	16	16 1/2	17
	FRONT RISE (XX-LONG SIZE)	1/2	13	13 1/2	14	14 1/2	15	15 1/2	16	16 1/2	17	17 1/2
3	BACK RISE (X-SHORT SIZE)	1/2	15 1/2	16	16 1/2	17	17 1/2	18	18 1/2	19	19 1/2	20
	BACK RISE (SHORT SIZE)	1/2	16	16 1/2	17	17 1/2	18	18 1/2	19	19 1/2	20	20 1/2
	BACK RISE (REGULAR SIZE)	1/2	16 1/2	17	17 1/2	18	18 1/2	19	19 1/2	20	20 1/2	21
	BACK RISE (LONG SIZE)	1/2	17	17 1/2	18	18 1/2	19	19 1/2	20	20 1/2	21	21 1/2
	BACK RISE (X-LONG SIZE)	1/2	17 1/2	18	18 1/2	19	19 1/2	20	20 1/2	21	21 1/2	22
	BACK RISE (XX-LONG SIZE)	1/2	18	18 1/2	19	19 1/2	20	20 1/2	21	21 1/2	22	22 1/2
4	LEG BOTTOM	1/2	17	17	17 3/4	17 3/4	18 1/2	18 1/2	19 1/2	19 1/2	20	20
5	HIP 3 1/2 UP FROM CROTCH	1	38	42	46	50	54	58	62	66	70	74
6	THIGHT 1" BELOW CROTCH	1/2	26	28	30	32	34	36	38	40	42	44
7	INSEAM (XTRA-SHORT)	+1 - 3/4	28 3/8	28.375	28 3/8	28 3/8	28 3/8	28 3/8	28 3/8	28 3/8	28.375	28.375
	INSEAM (SHORT)	+1 - 3/4	30 3/8	30 3/8	30 3/8	30 3/8	30 3/8	30 3/8	30 3/8	30 3/8	30 3/8	30 3/8
	INSEAM (REGULAR)	+1 - 3/4	32 3/8	32 3/8	32 3/8	32 3/8	32 3/8	32 3/8	32 3/8	32 3/8	32 3/8	32 3/8
	INSEAM (LONG)	+1 - 3/4	34 3/8	34 3/8	34 3/8	34 3/8	34 3/8	34 3/8	34 3/8	34 3/8	34 3/8	34 3/8
	INSEAM (XTRA-LONG)	+1 - 3/4	36 3/8	36 3/8	36 3/8	36 3/8	36 3/8	36 3/8	36 3/8	36 3/8	36 3/8	36 3/8
	INSEAM (2XTRA-LONG)	+1 - 3/4	38 3/8	38 3/8	38 3/8	38 3/8	38 3/8	38 3/8	38 3/8	38 3/8	38 3/8	38 3/8
8	OUTSEAM (XTRA-SHORT)	+1 - 3/4	36 7/8	37 3/8	37 7/8	38 3/8	38 7/8	39 3/8	39 7/8	40 3/8	40 7/8	41 3/8
	OUTSEAM (SHORT)	+1 - 3/4	39 3/8	39 7/8	40 3/8	40 7/8	41 3/8	41 7/8	42 3/8	42 7/8	43 3/8	43 7/8
	OUTSEAM (REGULAR)	+1 - 3/4	41 7/8	42 3/8	42 7/8	43 3/8	43 7/8	44 3/8	44 7/8	45 3/8	45 7/8	46 3/8
	OUTSEAM (LONG)	+1 - 3/4	44 3/8	44 7/8	45 3/8	45 7/8	46 3/8	46 7/8	47 3/8	47 7/8	48 3/8	48 7/8
	OUTSEAM (XTRA-LONG)	+1 - 3/4	46 7/8	47 3/8	47 7/8	48 3/8	48 7/8	49 3/8	49 7/8	50 3/8	50 7/8	51 3/8
	OUTSEAM (2XTRA-LONG)	+1 - 3/4	49 3/8	49 7/8	50 3/8	50 7/8	51 3/8	51 7/8	52 3/8	52 7/8	53 3/8	53 7/8

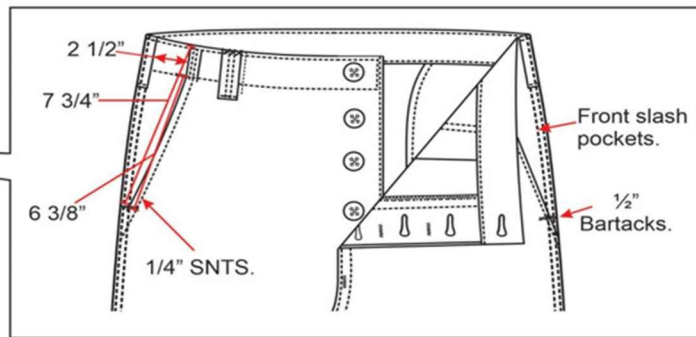
Standard	Requirement
Fiber Composition AATCC 20A	57% Nylon, 43% Cotton
Fabric Weight ASTM D3776	5.5 oz/yd ² ± 3%
Dimentional Stability to Laundry AATCC 135	Less than 3% Warp and Weft
Tear Strength ASTM D1424-83	>10lbs. Warp and Weft
Colorfastness to Washing AATCC 61-2A	Equal to or Greater than 4 rating
Colorfastness to Perspiration AATCC 15	Equal to or Greater than 4 rating
Colorfastness to Crocking AATCC 8	Equal to or Greater than 4 rating
Tensile Strength ASTM D5034-95	Warp > 150 lbs., Weft > 175 lbs.

FRONT VIEW

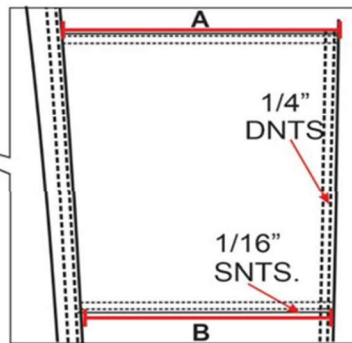


ITEM: 310
RIBBON, 3/8"

WAISTBAND VIEW



REINFORCES KNEE PATCH



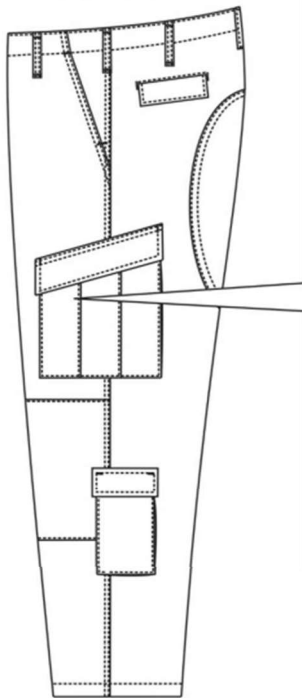
KNEE PATCH LENGTH

KNEE PATCH LENGTH

Size	Length A	Length B
XS	10	8 1/2
S	10 3/4	9
M	11 1/2	9 1/2
L	12 1/8	9.93
XL	12 7/8	10 3/8
2XL	13 5/8	10 7/8
3XL	14 3/8	11 1/4
4XL	15	11 5/8
5XL	15 3/4	12 1/8
6XL	16 1/2	12 1/2
7XL	17 1/4	13

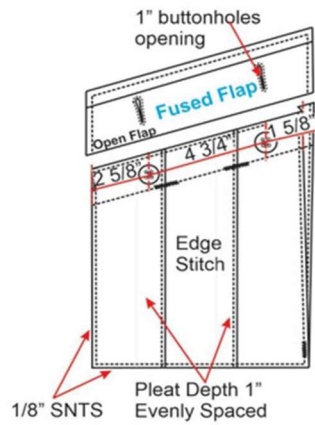
CARGO POCKET

SIDE VIEW

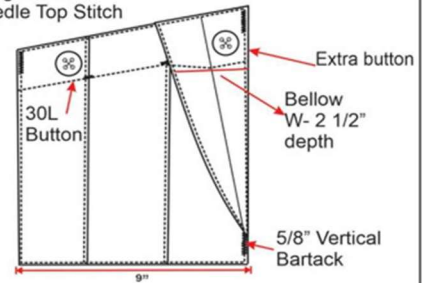


Abbreviations:

DNTS: Double Needle Top Stitching.
SNTS: Single Needle Top Stitching.



Attach Cargo Pocket Flap
 1/2" Up From Cargo Pocket
 1/4" Double Needle Top Stitch

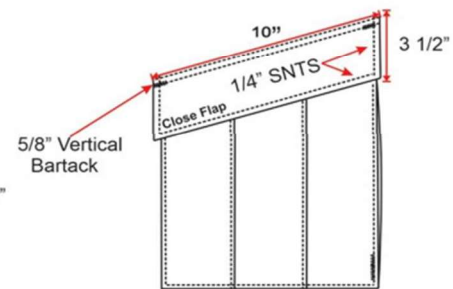
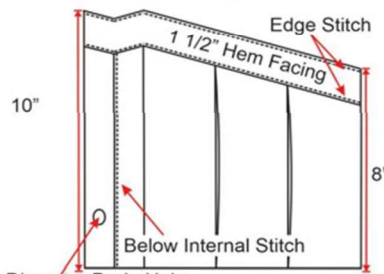


Cargo Pocket Dimensions

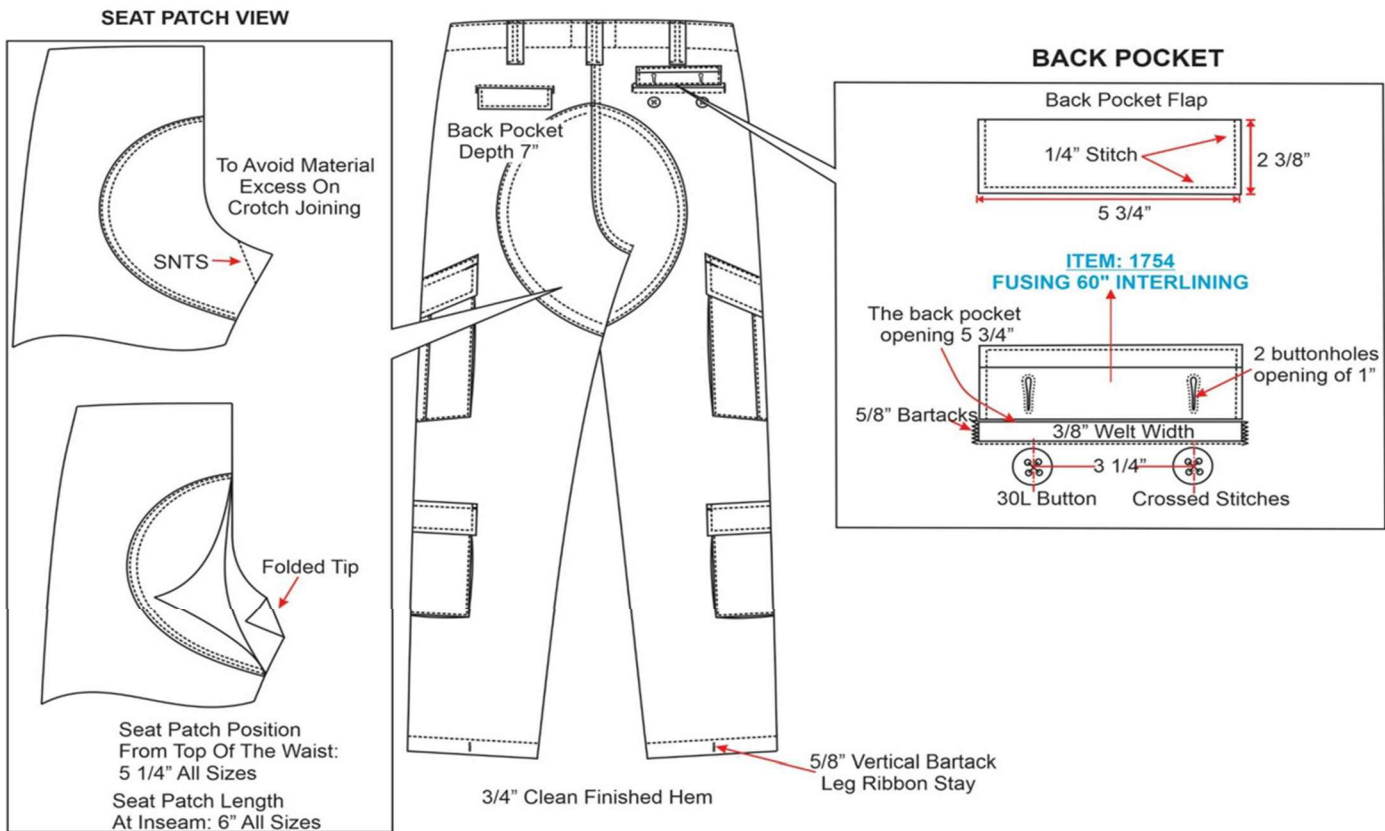
CARGO POCKET

Size	Width	Length At Side	Length At Highest
XS - 7XL	9	8	10

Reverse Cargo Pocket



BACK VIEW



Label: Size label sewn on all four sides.

Tag: Hangtag with size and SKU attached at waistband.

Packaging: Individually packaged with size and SKU on outside. Packaged thirty per box with the size on the outside of the box.

Specification for H2O Proof Gen2 Parka

Description-

Perfectly designed parka made with an improved three-layer windproof, waterproof, breathable material to keep you dry and comfortable no matter what the weather throws at you. The secret is the high quality, environmentally safe Bemis seam tapes. Seam tape is the critical link in the chain of waterproof protection and Bemis is the recognized worldwide technology leader in providing thermoplastic films for a myriad of industrial applications. Designed to be compatible with our Polar Fleece Jacket (not included).

Size Info-

Small - 3XLarge Regular

Medium - 2XLarge Long

Small - XLarge Short (Available in MultiCam® Only)

Color Code-

Multicam (2026)

Features-

- Stand up zip-through collar with stowable hood and drawcords
- Sleeve pockets allow for sewn-on patches
- Adjustable sleeve cuffs
- Hidden map pocket
- Non-freezing two-way zipper with double storm flap
- Insignia/badge loop on front placket
- Nylon reinforced elbows
- Zippered openings in the underarm for ventilation
- Drawstring waist with cord lock
- Bemis taped seams
- Advanta™ inner lining



Tag: Hangtag with size and SKU attached at sleeve.

Packaging: Individually packaged with size and SKU on outside. Twelve to 15 per box. Box labeled with size.

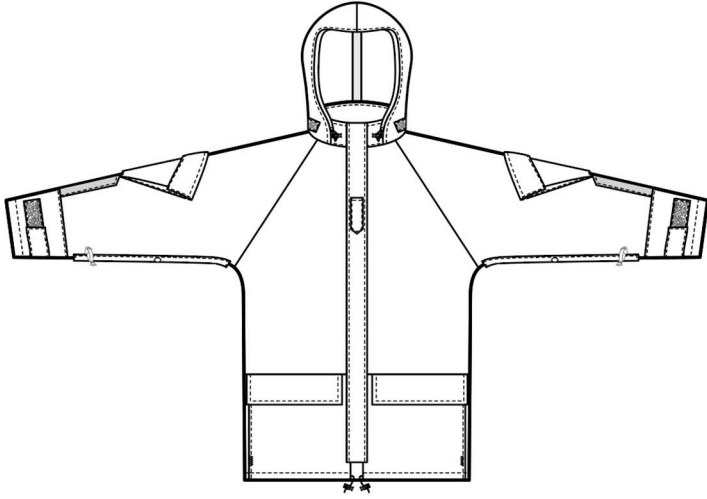
Specification for H2O Proof Gen2 Parka

POINT OF MEASURE	Tol +/-	SIZE									
		XS	S	M	L	XL	2XL	3XL	4XL	5XL	6XL
Chest 1" Bellow armhole	1	42	46	50	54	58	62	66	70	74	78
Sweep (Relaxed)	1	42	46	50	54	58	62	66	70	74	78
Center Back Length (X-Short)	1/2	22	23	24	25	26	27	28	29	30	31
Center Back Length (Short)	1/2	24	25	26	27	28	29	30	31	32	33
Center Back Length (Regular)	1/2	26	27	28	29	30	31	32	33	34	35
Center Back Length (Long)	1/2	28	29	30	31	32	33	34	35	36	37
Center Back Length (X-Long)	1/2	30	31	32	33	34	35	36	37	38	39
Body Length from HPS (X-Short)	1/2	23 5/8	24 3/4	25 7/8	27	28 1/8	29 1/4	30 3/8	31 1/2	32 5/8	33 3/4
Body Length from HPS (Short)	1/2	25 5/8	26 3/4	27 7/8	29	30 1/8	31 1/4	32 3/8	33 1/2	34 5/8	35 3/4
Body Length from HPS (Regular)	1/2	27 5/8	28 3/4	29 7/8	31	32 1/8	33 1/4	34 3/8	35 1/2	36 5/8	37 3/4
Body Length from HPS (Long)	1/2	29 5/8	30 3/4	31 7/8	33	34 1/8	35 1/4	36 3/8	37 1/2	38 5/8	39 3/4
Body Length from HPS (XLong)	1/2	31 5/8	32 3/4	33 7/8	35	36 1/8	37 1/4	38 3/8	39 1/2	40 5/8	41 3/4
Neck Circumference	1/4	25	26	27	28	29	30	31	32	33	34
Sleeve Length From CB (X-Short)	1/2	28	29	30	31	32	33	34	35	36	37
Sleeve Length From CB (Short)	1/2	30	31	32	33	34	35	36	37	38	39
Sleeve Length From CB (Regular)	1/2	32	33	34	35	36	37	38	39	40	41
Sleeve Length From CB (Long)	1/2	34	35	36	37	38	39	40	41	42	43
Sleeve Length From CB (X-Long)	1/2	36	37	38	39	40	41	42	43	44	45
Sleeve Width 1" Bellow Armhole	1/2	12 1/4	13	13 3/4	14 1/2	15 1/4	16	16 3/4	17 1/2	18 1/4	19
Hidden Chest Pocket Opening (X-Short)	1/4	7	7	7	7	7	7	7	7	7	7
Hidden Chest Pocket Opening (Short)	1/4	8	8	8	8	8	8	8	8	8	8
Hidden Chest Pocket Opening	1/4	9	9	9	9	9	9	9	9	9	9
Hand Pocket Opening	1/4	6	6	6	6	6	6	6	6	6	6
CF Zipper Length (X-Short)	0	20 1/2	21 1/2	22 1/2	23 1/2	24 1/2	25 1/2	26 1/2	27 1/2	28 1/2	29 1/2
CF Zipper Length (Short)	0	22 1/2	23 1/2	24 1/2	25 1/2	26 1/2	27 1/2	28 1/2	29 1/2	30 1/2	31 1/2
CF Zipper Length (Regular)	0	24 1/2	25 1/2	26 1/2	27 1/2	28 1/2	29 1/2	30 1/2	31 1/2	32 1/2	33 1/2
CF Zipper Length (Long)	0	26 1/2	27 1/2	28 1/2	29 1/2	30 1/2	31 1/2	32 1/2	33 1/2	34 1/2	35 1/2
CF Zipper Length (X-Long)	0	28 1/2	29 1/2	30 1/2	31 1/2	32 1/2	33 1/2	34 1/2	35 1/2	36 1/2	37 1/2
Underarm Zipper Length (X-Short)	0	12 1/2	12 1/2	12 1/2	12 1/2	12 1/2	12 1/2	12 1/2	12 1/2	12 1/2	12 1/2
Underarm Zipper Length	0	13 1/2	13 1/2	13 1/2	13 1/2	13 1/2	13 1/2	13 1/2	13 1/2	13 1/2	13 1/2
Hidden Chest Pocket Zipper Length (X-Short)	0	6 1/2	6 1/2	6 1/2	6 1/2	6 1/2	6 1/2	6 1/2	6 1/2	6 1/2	6 1/2
Hidden Chest Pocket Zipper Length (Short)	0	7 1/2	7 1/2	7 1/2	7 1/2	7 1/2	7 1/2	7 1/2	7 1/2	7 1/2	7 1/2
Hidden Chest Pocket Zipper Length	0	8 1/2	8 1/2	8 1/2	8 1/2	8 1/2	8 1/2	8 1/2	8 1/2	8 1/2	8 1/2

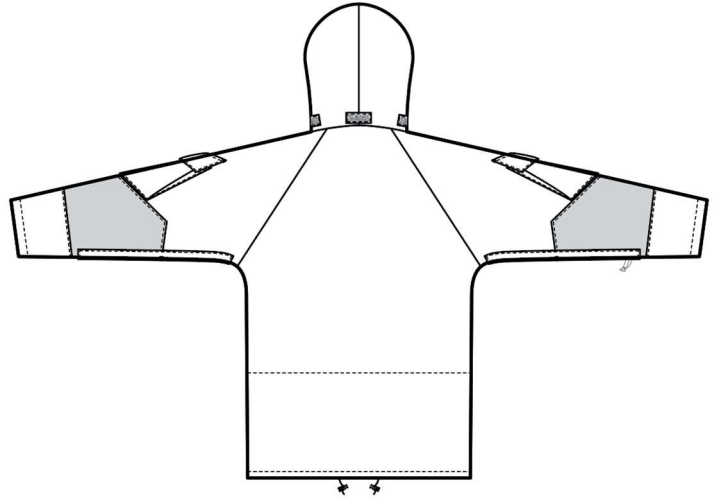
Standard	Requirement
Fiber Composition AATCC 20A	100% Nylon (Taslite Multicam Print)
Fabric Weight ASTM D3776	2.8 oz/yd2 ± 3%
Dimentional Stability to Laundry AATCC 135	Less than 3% Warp and Weft
Colorfastness to Washing AATCC 61-2A	2A WASH
Tear Strength D1424-21	Equal to or Greater than 140 lbs. Warp and 140 lbs. Weft
Tensile Strength D5034-21	Equal to or Greater than 4 lbs. Warp and 4 lbs. Weft
Colorfastness to Perspiration AATCC 15	Equal to or Greater than 4 rating
Colorfastness to Crocking AATCC 8	Equal to or Greater than 4 rating
EN ISO 105-L01	nIR Compliant

Specification for H2O Proof Gen2 Parka

FRONT VIEW



BACK VIEW



Specification for Gen3 Level 3 ECWCS Fleece Jacket

Description-

The Extreme Cold Weather Clothing System or Gen-III ECWCS is a protective cold weather clothing system created originally by the United States Army Natick Soldier Research, Development, and Engineering Center. This system consisted of parka and trousers plus 20 other individual clothing, headwear, and footwear items which are used in various combinations to meet the cold weather environmental requirements of the US military. Our base layer level garments are based on these designs to give our garments the same quality and utility as the base layers of this system. The Level-3 garments provide heavy insulation in cold and an additional layer of protection in frigid conditions. The Polartec® Thermal Pro fabric is 30 times more durable than regular fleece. Meets or exceeds military specification GL/PD-06-03. The perfect heavyweight layer on those frigid days.

Size Info-

Small - 3XLarge Regular

Color Code-

Tan 499 (2097)

Features-

- Center one-way zip closure
- Cover hood on zipper for comfort
- Loop fasteners for attaching name/rank tape
- Nylon reinforcements
- Dual interior upper chest pockets
- Stretch grid fleece side panels for improved mobility
- Dual exterior hand warmer pockets

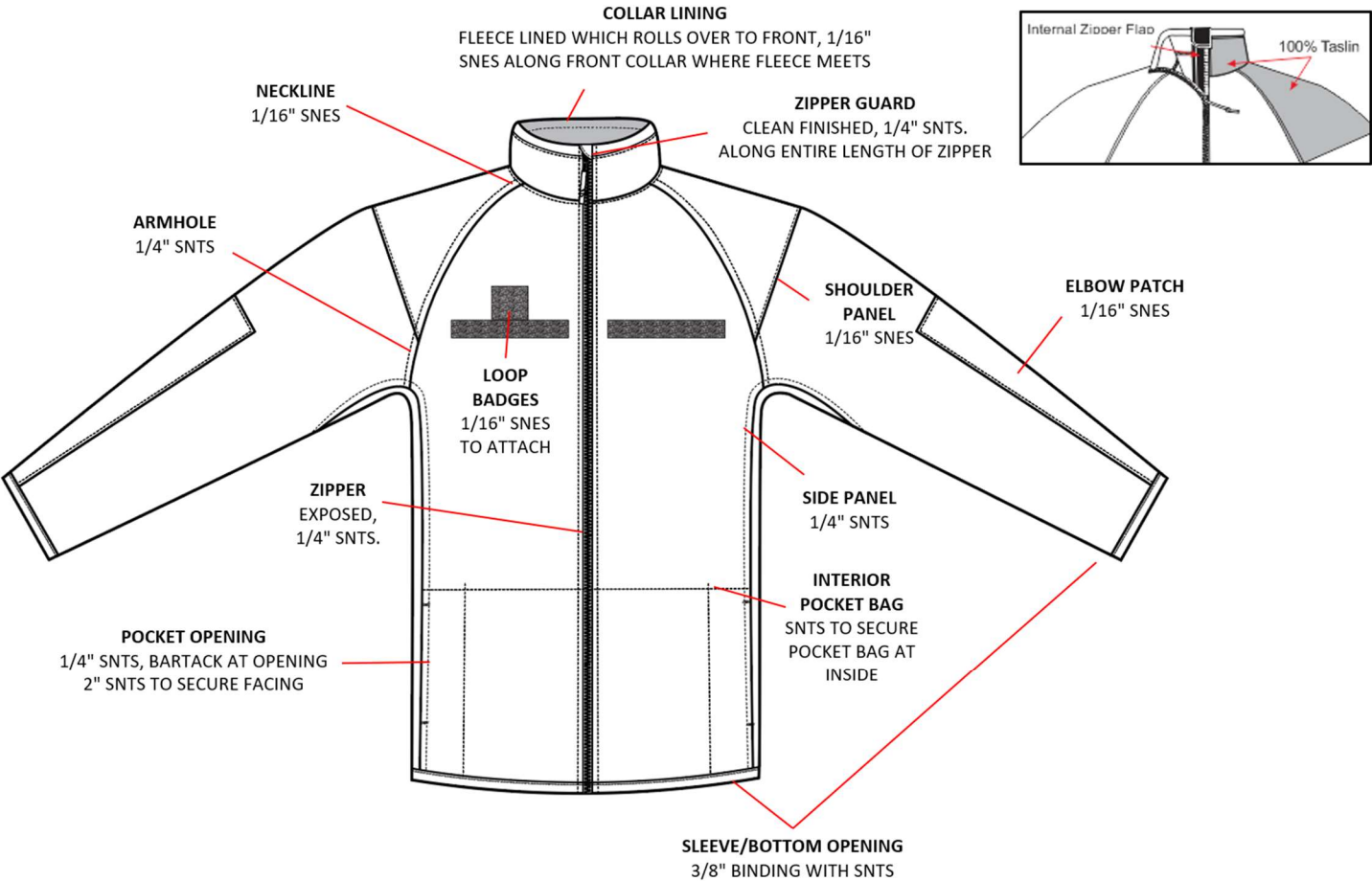


Specification for Gen3 Level 3 ECWCS Fleece Jacket

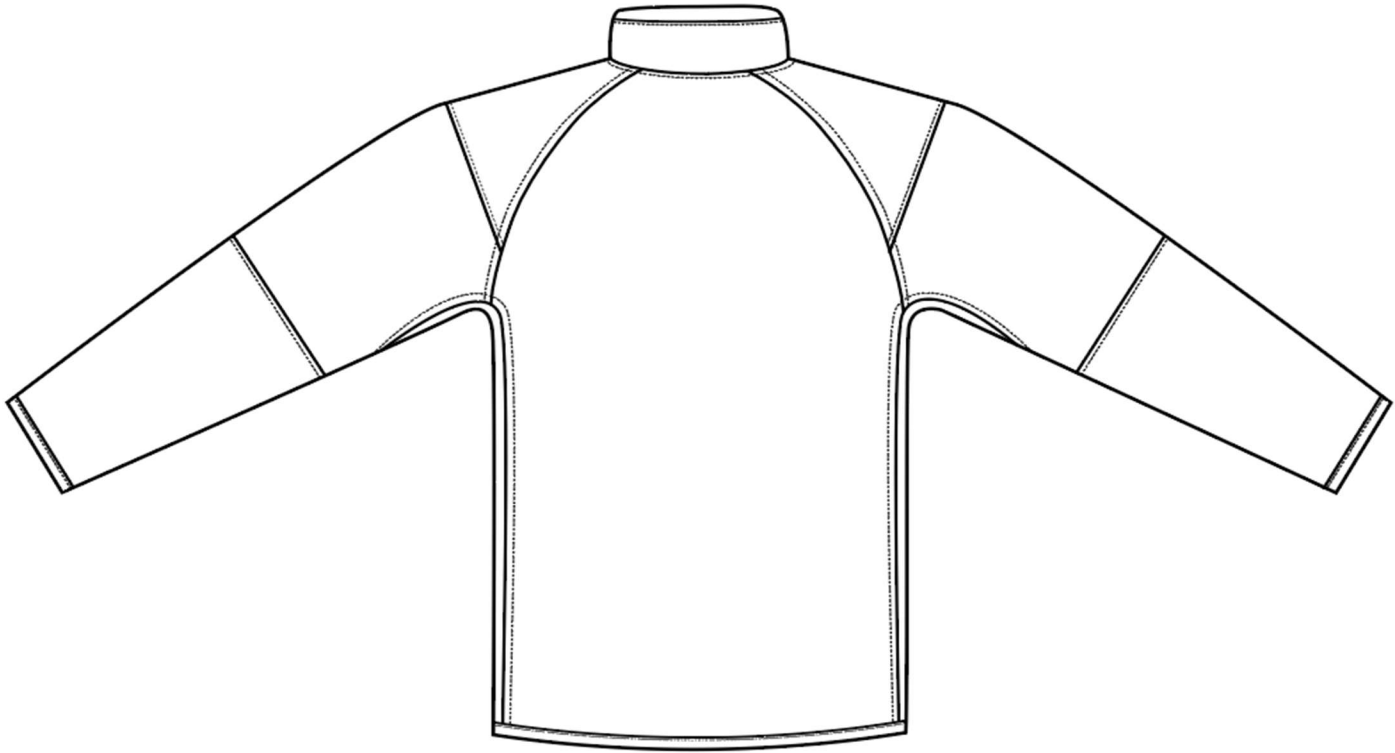
FINISHED MEASUREMENTS									
POM	DESCRIPTION	tol +	XS	S	M	L	XL	2XL	3XL
CWW01	CHEST	+ 1/2 - 1/4	22	24	26	28	30	32	34
	OUTSIDE OKT OPENING (SIZE X-SHORT)	+/- 1/4	6 1/2	6 1/2	6 1/2	6 1/2	6 1/2	6 1/2	6 1/2
	OUTSIDE OKT OPENING (SIZE SHORT)	+/- 1/4	7	7	7	7	7	7	7
HBW01	SWEEP	*	19	21	23	25	27	29	31
NZF01	ZIPPER LENGTH (SIZE X-SHORT)	+/- 1/2	25 1/2	26	26 1/2	27	27 1/2	28	28 1/2
	ZIPPER LENGTH (SIZE SHORT)	+/- 1/2	26 1/2	27	27 1/2	28	28 1/2	29	29 1/2
	ZIPPER LENGTH (SIZE REGULAR)	+/- 1/2	27 1/2	28	28 1/2	29	29 1/2	30	30 1/2
	ZIPPER LENGTH (SIZE LONG)	+/- 1/2	28 1/2	29	29 1/2	30	30 1/2	31	31 1/2
	ZIPPER LENGTH (SIZE X-LONG)	+/- 1/2	29 1/2	30	30 1/2	31	31 1/2	32	32 1/2
	ZIPPER LENGTH (SIZE XX-LONG)	+/- 1/2	30 1/2	31	31 1/2	32	32 1/2	33	33 1/2
CBL01	BACK LENGTH (SIZE X-SHORT)	+/- 1/2	25	25 1/2	26	26 1/2	27	27 1/2	28
	BACK LENGTH (SIZE SHORT)	+/- 1/2	26	26 1/2	27	27 1/2	28	28 1/2	29
	BACK LENGTH (SIZE REGULAR)	+/- 1/2	27	27 1/2	28	28 1/2	29	29 1/2	30
	BACK LENGTH (SIZE LONG)	+/- 1/2	28	28 1/2	29	29 1/2	30	30 1/2	31
	BACK LENGTH (SIZE X-LONG)	+/- 1/2	29	29 1/2	30	30 1/2	31	31 1/2	32
	BACK LENGTH (SIZE XX-LONG)	+/- 1/2	30	30 1/2	31	31 1/2	32	32 1/2	33
ALB02	SLEEVE LENGTH SIZE X-SHORT	+/- 1/2	30 1/2	31 1/4	32	32 3/4	33 1/2	34 1/4	35
	SLEEVE LENGTH SIZE SHORT	+/- 1/2	31 1/2	32 1/4	33	33 3/4	34 1/2	35 1/4	36
	SLEEVE LENGTH SIZE REGULAR	+/- 1/2	33	33 3/4	34 1/2	35 1/4	36	36 3/4	37 1/2
	SLEEVE LENGTH SIZE LONG	+/- 1/2	34 1/2	35 1/4	36	36 3/4	37 1/2	38 1/4	39
	SLEEVE LENGTH SIZE XX-LONG	+/- 1/2	36	36 3/4	37 1/2	38 1/4	39	39 3/4	40 1/2
	SLEEVE LENGTH SIZE X-LONG	+/- 1/2	37	37 3/4	38 1/2	39 1/4	40	40 3/4	41 1/2
ALB03	CUFF OPENING	+/- 1/4	4	4 1/4	4 1/2	4 3/4	5	5 1/4	5 1/2

Standard	Requirement
Fiber Composition AATCC 20A	100% Nylon (Taslite Multicam Print)
Fabric Weight ASTM D3776	2.8 oz/yd2 ± 3%
Dimentional Stability to Laundry AATCC 135	Less than 3% Warp and Weft
Colorfastness to Washing AATCC 61-2A	2A WASH
Tear Strength D1424-21	Equal to or Greater than 140 lbs. Warp and 140 lbs. Weft
Tensile Strength D5034-21	Equal to or Greater than 4 lbs. Warp and 4 lbs. Weft
Colorfastness to Perspiration AATCC 15	Equal to or Greater than 4 rating
Colorfastness to Crocking AATCC 8	Equal to or Greater than 4 rating
EN ISO 105-L01	nIR Compliant

Specification for Gen3 Level 3 ECWCS Fleece Jacket



Back View



Tag: Hangtag with size and SKU attached at sleeve.

Packaging: Individually packaged with size and SKU on outside. Twenty to 25 per box. Box labeled with size.

Specification for BDU Belt

Description-

These high-quality 100% nylon BDU Belts with durable metal buckle fit perfectly with any BDU or tactical uniform. 54" overall length can be cut to size for a custom fit to ensure you stay comfortable and looking professional all day, every day. Belts are 1.75" wide to fit most belt loops.

Size Info-

OSFM, (Cut length for customize fit)

Stock colors- Tan 499

Features-

- 1.75" wide to fit most belt loops
- 100% nylon webbing with metal buckles
- 54" overall length, can be cut to size for custom fit



packaging: Individually wrapped with size and SKU on outside. 150 per box. Size on outside of box.

Specification for Patrol Cap OCP Scorpion

Description-

The Tru-Spec Patrol Cap in OCP Scorpion is made from current U.S. military specification, crease and wrinkle resistant CL-8 50/50 CORDURA® nylon cotton vat dyed rip-stop material.

Size Info-

1/4" size increments from 6 3/4" to 7 3/4"

Color Code-

Scorpion OCP (1641)

Features-

- 2-ply construction
- Built in internal map pocket
- Loop name tape on back panel
- 2 1/4" bill
- GSA/TAA Compliant



Specification for Patrol Cap OCP Scorpion

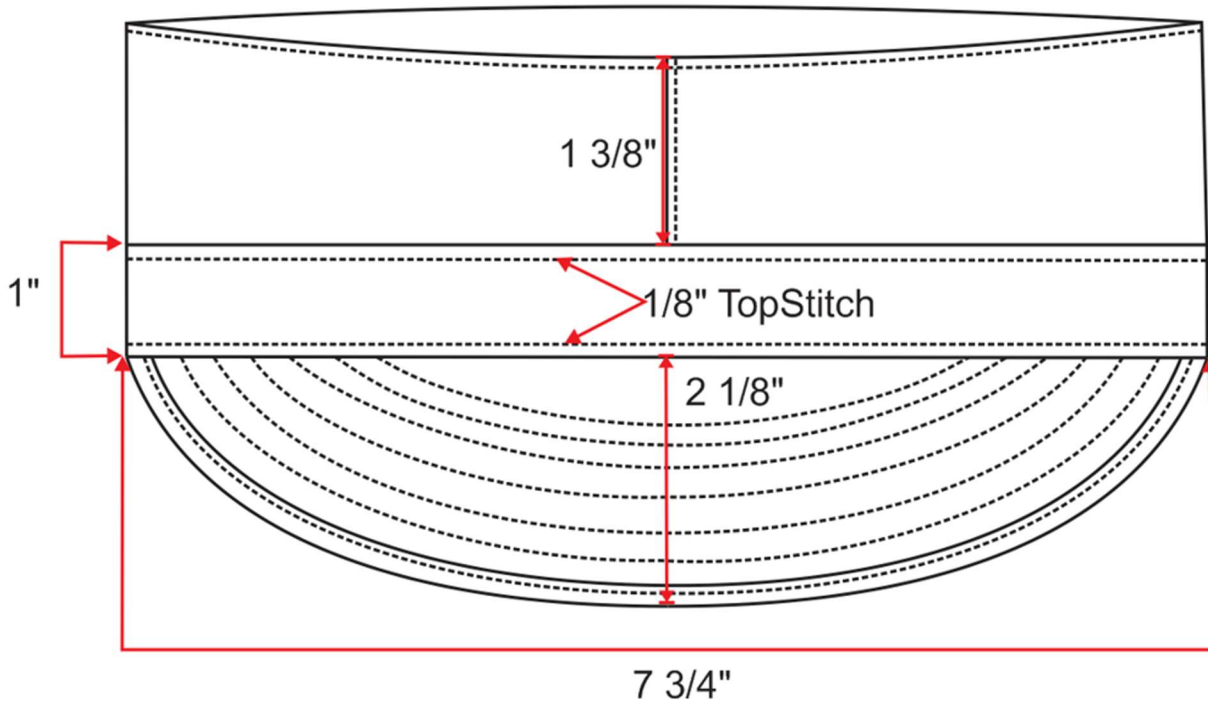
FINISHED MEASUREMENTS															
POM	DESCRIPTION	Tol +/-	6 1/4	6 3/8	6 1/2	6 5/8	6 3/4	6 7/8	7	7 1/8	7 1/4	7 3/8	7 1/2	7 5/8	7 3/4
A	HEIGHT REAR PANEL(Altura Panel	1/4	3 1/2	3 1/2	3 1/2	3 1/2	3 1/2	3 1/2	3 1/2	3 1/2	3 1/2	3 1/2	3 1/2	3 1/2	3 1/2
F	INNER CIRCUMFERENCE (Circunferencia Interna)	1/4	19 3/4	20 1/8	20 1/2	20 7/8	21 1/4	21 5/8	22	22 3/8	22 3/4	23 1/8	23 1/2	23 7/8	24 1/4
C	HEIGHT SIDE PANEL (Altura Panel Lateral)	1/4	3 3/8	3 3/8	3 3/8	3 3/8	3 3/8	3 3/8	3 3/8	3 3/8	3 3/8	3 3/8	3 3/8	3 3/8	3 3/8
D	HEIGHT FRONT PANEL (Altura Panel Frontal)	1/8	2 3/8	2 5/8	2 5/8	2 5/8	2 5/8	2 5/8	2 5/8	2 5/8	2 5/8	2 5/8	2 5/8	2 5/8	2 5/8
B	HEIGHT TAPE (Altura de Cinta)		1	1	1	1	1	1	1	1	1	1	1	1	1
E	DISPLAY WIDTH (Ancho de Visor)		2 1/8	2 1/8	2 1/8	2 1/8	2 1/8	2 1/8	2 1/8	2 1/8	2 1/8	2 1/8	2 1/8	2 1/8	2 1/8

Standard	Requirement
Fiber Composition AATCC 20A	50% Nylon, 50% Cotton
Fabric Weight ASTM D3776	6.0 to 7.0 oz/yd ²
Dimensional Stability to Laundry AATCC 135	Less than 3% Warp and Weft
Tear Strength ASTM D1424-83	>7.0 lbs. Warp and >5.0 lbs. Weft
Colorfastness to Washing AATCC 61-2A	Equal to or Greater than 3.0 rating
Colorfastness to Perspiration AATCC 15	Equal to or Greater than 3.0 rating
Colorfastness to Crocking AATCC 8	Equal to or Greater than 3.5 rating
Tensile Strength ASTM D5034-95	Warp > 200 lbs., Weft > 90 lbs.

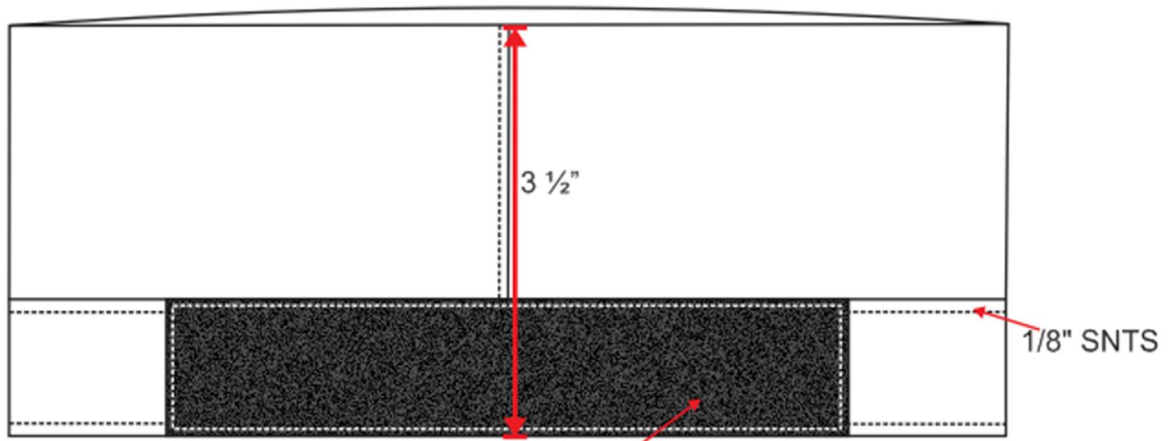
Tag: Hangtag with size and SKU attached.

Packaging: Individually wrapped with size and SKU on outside. 144 per box with size on outside of box.

Front View



Back View



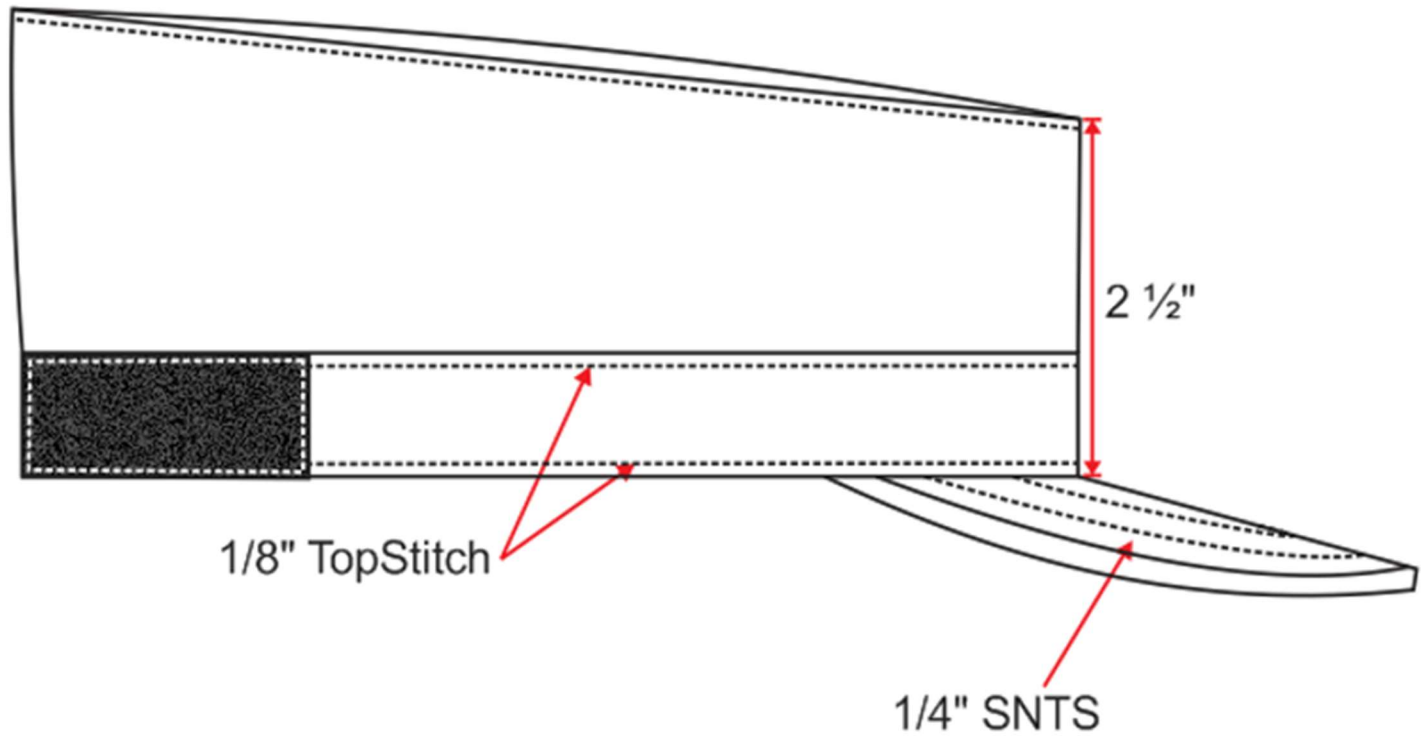
ITEM: 570
VELCRO LOOP 1"

$5 \frac{1}{2}"$ W x $1"$ L
Velcro loop

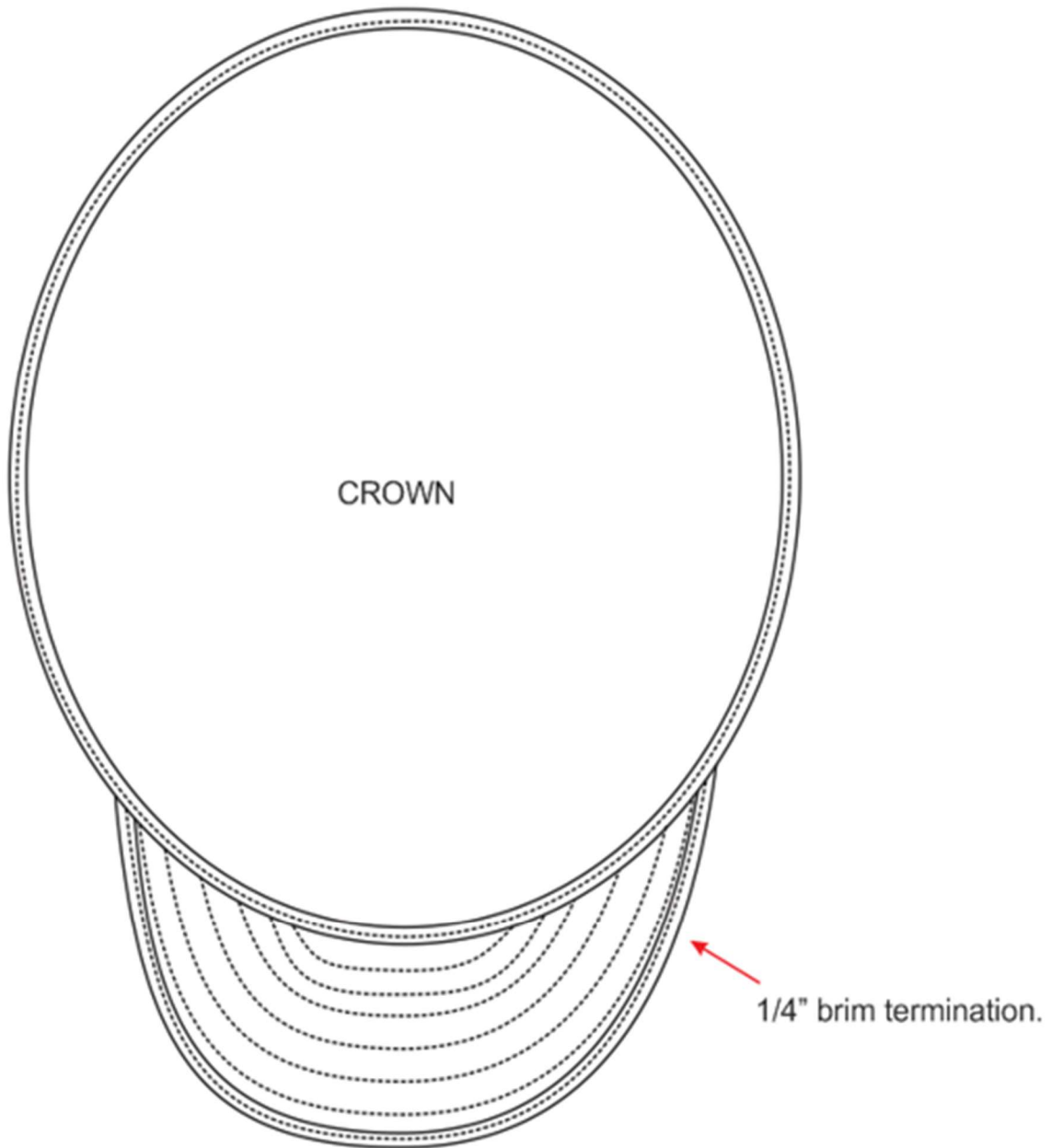
Abbreviations

SNTS: Single Needle Top Stitching.

Side View



Top View



Appendix C
Lot 3
Military Uniform Accessory
Specifications
Updated January 24, 2024

18 BADGES

All badges to be individually packaged with a clear front so that item is viewable from outside of package with built-in hangtag and SKU on back of package. Packaged 25 per box.

18-1 Badge, Coast Card (photo only)

18-2 Contract Badge, Air Force

Badge No. S-1689/S-5579 without star. Badge to be metal with prongs and clutches on back of the badge.

18-3 Badge, Air Force with star

a. Style: Same as Air Force contract badge except with star.

Badge No. S-1689/S-5579 with star. Badge to be metal with prongs and clutches on back of the badge.

b. Size: Length to be 2 inches $\frac{3}{8}$ of an inch star.

18-4 Contract Badge, Army

a. Style: Badge to be metal with prongs and clutches on back of the badge. Badge No. 55295.

b. Color: Black with silver crossed rifles and state seal

c. Size: Length to be 1- $\frac{3}{4}$ inches and width to be $\frac{1}{2}$ of an inch.

18-5 Badge, Distinguished Military Student

a. Style: Bordered badge with shield. Badge to be metal with prongs and clutches on back of badge.

b. Color: Silver with red border and silver shield with blue at bottom.

c. Size: 1- $\frac{3}{4}$ inches long

18-6 NSF Cyber Corps. (photo only)

18-7 Cyber Scholar (photo only)

18-8 Contract badge, Marine

a. Style: Badge to be metal with prongs and clutches on back of the badge.

Miniature device centered in middle with lettering “The” on one side and “Citadel” on the other.

b. Color: Red background, lettering and device gold.

c. Size: Length to be 1- $\frac{3}{4}$ inches and width to be $\frac{1}{2}$ of an inch.

18-9 Contract Badge, Navy

- a. Style:** Badge to be metal with prongs and clutches on the back of the badge. Miniature device centered in middle with lettering “The” on one side and “Citadel” on the other. Badge No.S-1689/S-5579.
- b. Color:** Navy blue background, lettering and device silver
- c. Size:** Length to be two inches and width to be 1/2 of an inch.



18-10 Drill Master

Style: Badge to be metal with three prongs and clutches on the back of the badge.



19 PATCHES

All patches to be individually packaged with a clear front so that item is viewable from outside of package with built-in hangtag and SKU on back of package. Packaged 25 per box.

19-1 Patches, Drill Master (photo only) approximately 3 ¼" w x 2 ¾" h



19-2; 19-3; 19-4; 19-5 Patches, BAND (4 different styles)

- a. Color: Black velvet with gold embroidery.
- b. Back: Velcro
- c. **Packaged:** 2 patches per package.
- d. **Styles:**
 - a. **Lyre:** approximately 2 ½" w x 3 1/8" h
 - b. **Drum:** approximately 2 ¼" w x 2 2/3" h
 - c. **Drum with Wreath:** approximately 2 ¾"w x 2 ½"h
 - d. **Pipe with Wreath:** approximately 2 ¾"w x 3 ¼" h
 - e. **Pipe without Wreath:** approximately 2" w x 2 ½" h



19-6 Patches, Big Red approximately 3 2/8" w x 1 7/8" h

- a. **Style:** Palmetto tree and half moon.
- b. **Color:** Red patch with white embroidery.
- c. **Back:** Velcro



19-7 Patches, Bathrobe

- a. **Style:** Citadel Seal
- b. **Color:** White with light blue lettering and tree
- c. **Size:** 4 inches in diameter



19-8 Patches, Citadel Seal

- a. Style:** Citadel Seal with lettering “The Citadel-
Charleston South Carolina around circle
and 1842 under tree.
- b. Color:** Army green with black lettering
and tree.
- c. Size:** 3-1/4 inches in diameter
- d. Back:** Velcro.



19-9 Patches, Summerall Guard

- a. Style:** Crossed Rifles with shako, class year and
lettering.
- b. Color:** Light blue with black border, rifle outline, plume
and year. Gold letters “The Summerall Guards-
The Citadel”. Gold shako device and shako strap.
Silver rifles, slings on rifles and shako.
- c. Size:** 4 ¼ inches in diameter



19-10 Patch, Army (photo only) approximately 3”w x 4”h



19-11 Patch, Criminal Justice (photo only) approximately 3 ¾” in diameter



19-12 Patch, Military History (photo only) approximately 4”w x 5”h



19-13 **Patch, Bowling (photo only)** approximately 5" w x 3 ½" h



19-14 **Patch, Coast Guard Auxiliary (photo only)** approximately 3 ½" in diameter



19-15 **Patch, Rifle Legion**

- a. Style:** Triangle with Palmetto tree and half moon.
Lettering “The Citadel” centered at top with
“Rifle” on left side of the tree and “Legion” on
right side of tree. “Drill Team” at bottom of
triangle (“Team” is centered under Drill)
- b. Color:** Navy blue background with white half moon
and lettering. Green tree with brown trunk and
green grass. Border gold.
- c. Size:** 4 ¾” at top and 4” sides



19-16 **Patch, Combat Veteran (photo only)** approximately 3 ¾” w x ¾” h



19-17 Patch, Chapel Color Guard (photo only) approximately 3 ¼” diameter



19-18 Patch, Major Roland F. Wooten (photo only) approximately 3 ½” diameter



19-19 Patch, Junior Sword Arch (photo only) 1 ¼”h x 3 ½” w



19-20 Patch, Wilkerson Pipeline (photo only) approximately 3 7/8" w x 4"h



19-21 Patch, OCP THE CITADEL Tape

- a. Style:** 1" h x 5" w tape with THE CITADEL embroidered in 3/4" letters. Length of tape is determined by length of name. Tapes are ordered in pairs; two tapes per person.
- b. Color:** OCP Camouflage with black embroidered letters.
- c. Back:** Velcro.



19-22 Patch, OCP Company

- a. Style:** Rectangular approximately **2" high and 4 ¼" wide**.
- b. Color:** OCP Camouflage with black embroidered letters.
- c. Lettering:** A Company, B Company, C Company,
D Company, E Company, F Company
G Company, H Company, I Company
K Company, L Company, M Company
N Company, O Company, P Company
R Company, S Company, T Company,
V Company, Band Company, Palmetto
Company.
- d. Back:** Velcro



19-23 Patch, OCP Class Numerals

- a. Style:** Rectangular approximately **2" high x 2" wide**.
- b. Color:** OCP Camouflage with black embroidered numbers.
- c. Back:** Velcro
- d. Numbering:**
Seniors- "1" Juniors- "2" Sophomores- "3" Freshmen- "4"



19-24 Patch, OCP Battalion Staff

- a. Style: Rectangular approximately 2” high and 4 1/4” wide.
- b. Color: OCP Camouflage with black embroidered letters.
- c. Lettering: Centered two lines with battalion on top line:
1BN, 2BN, 3BN, 4BN, 5BN; STAFF on bottom line.
- d. Back: Velcro



19-25 Patch, OCP Officer Rank

- a. Style: Rectangular approximately 2” high x 2” wide.
- b. Color: OCP Camouflage with black embroidered letters.
- c. Back: Velcro
- d. Lettering: Ranks include Colonel, Lieutenant Colonel, Major, Captain, First Lieutenant, Second Lieutenant



19-26 PATCH, EAGLE SCOUT ASSOCIATION (approx. 50 per year); 3 ½” diameter.



19—27 PATCH, LEAD SCHOLAR (approxiamtely 75 per year); 2.5”w x 3.45” h



19-28 PATCH, UNDERWATER RUGBY (approximately 25 per year); 3.0” w x 2.5”h



20 Cartridge Box

- a. **Style:** 6 oz. Genuine cowhide
- b. **Color:** Black
- c. **Mould:** Wood block inside cartridge box on both ends. Brads or tacks to be driven into the wood block for support. Front, bottom, back, and both ends).
- d. **Fastener:** Heavy brass buttons, center bottom
- e. **Attachment:** Two double slotted brass sliders, size 2-1/8 inches, to be set at proper angle for attaching to white web belts. Brads used to attach to the back of the cartridge box. Strap attached to the top of the back with brads on each end. (Brads required to be all the way out on each end).
- f. **Stitching:** To be No. 30 waxed black cotton harness thread. Brad buckles and straps with brads clinched on insides.
- g. **Size of Box:** Five and 5/8 inches wide by 3-5/8 inches high by 1-1/4 inches deep. Flap to be 5-5/8 inches wide and to cover front of box 4-1/2 inches at widest part.
- h. **Packaging:** Individually wrapped with SKU on outside; 50 per box.



21 Music Pouch

- a. **Style:** 6 oz. Genuine cowhide
- b. **Color:** Black
- c. **Fastener:** Heavy brass buttons
- d. **Attachment:** Device: Two doubled slotted brass slides, size 2-1/8 inches by 1-1/4 inches, to be set at proper angle for attaching white web belts. Brads used to attach to the back of music pouches. Straps attach to the top on the back with brads on each end. Brads required to be attached at very end of each side.
- e. **Stitching:** To be No. 30 waxed black cotton harness thread
- f. **Size of Pouch:** Eight inches wide by 6 inches high by 1-1/2 inches deep. Flap to be 8-1/2 inches wide at top and 8-3/4 inches at base by 6 inches high. These are approximate measurements.
- g. **Mould:** Wood block inside music pouch on both ends. Brads or tacks to be driven into wood block for support (front, bottom, back, and both ends).
- h. **Packaging:** Individually wrapped with SKU on outside; 50 per box.



22 **CHEVRONS**

Chevrons to be packaged two per pack in zip top bag with SKU on outside.

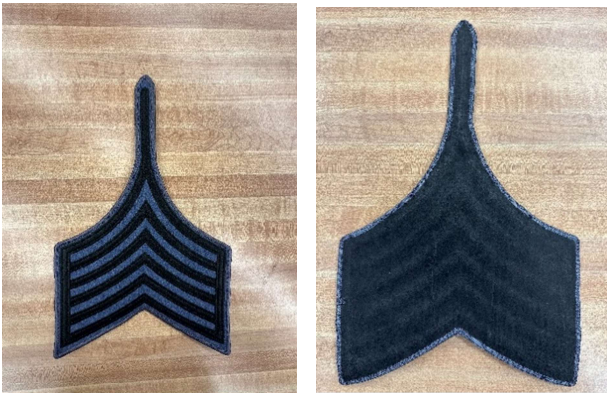
Full Dress

- Background: 16 oz. black broadcloth with buckram backing
- Edge: To be ¼” wide around chevron
- Bars: Embroidered synthetic gold 3/8” wide, spaced 3/8” apart
- Insignia: Embroidered synthetic gold, stars, diamonds, balls, squares, crosses, and wreaths



Dress Blouse

- Material: 18 oz. Kersey wool gray, Indigo dyed
- Edge: Background edge to be ¼” wide around chevron
- Bars: Embroidered black synthetic thread 3/8” wide, spaced 3/8” apart
- Insignia: Embroidered black synthetic thread, stars, diamonds, balls, squares, crosses, and wreaths



<p>#1 Gold & Gray</p> <p>Center: 10 in.</p> <p>Side:4 ½ in.</p> <p>Width7 ¼ in.</p> <p>Quantity:</p> <p>Arc from symbol: no arc.</p>
--



#2 Gold & Gray
 Center: 8 ½ in.
 Side: 3 5/8 in.
 Width: 7 ¼ in.
 Quantity:
 Arc from symbol: no arc.



#3 Gold & Gray
 Center: 12 in.
 Side: 3 ¼ in.
 Width: 7 ¼"
 Quantity:
 Arc from symbol: 2 ½ in.



#4 Gold & Gray
 Center: 12 in.
 Side: 3 ¼ in.
 Width: 7 ¼ in.
 Quantity:
 Arc from symbol: 4 3/16 in.



#5 Gold & Gray
 Center: 12 in.
 Side: 5 ½ in.
 Width: 7 ¼ in.
 Quantity:
 Arc from symbol: no arc.



#6 Gold & Gray
 Center: 12 in.
 Side: 5 ½ in.
 Width: 7 ¼ in.
 Quantity:
 Arc from symbol: no arc.



#7 Gold & Gray
 Center: 12 in.
 Side: 5 ½ in.
 Width: 7 ¼ in.
 Quantity:
 Arc from symbol: no arc.



#8 Gold & Gray
 Center: 12 in.
 Side: 5 ½ in.
 Width: 7 ¼ in.
 Quantity:
 Arc from symbol: no arc.



#9 Gold & Gray
 Center: 12 in.
 Side: 5 ½ in.
 Width: 7 ¼ in.
 Quantity:
 Arc from symbol: no arc.



#10 Gold & Gray
 Center: 12 in.
 Side: 5 ½ in.
 Width: 7 ¼ in.
 Quantity:
 Arc from symbol: no arc.



#12 Gold & Gray
 Center: 11 ½ in.
 Side: 5 ½ in.
 Width: 7 ¼ in.
 Quantity:
 Arc from symbol: no arc.



#13 Gold & Gray
 Center: 12 in.
 Side: 5 ½ in.
 Width: 7 ¼ in.
 Quantity:
 Arc from symbol: no arc.



#14 Gold & Gray
 Center: 12 in.
 Side: 5 ½ in.
 Width: 7 ¼ in.
 Quantity:
 Arc from symbol: no arc.



#15 Gold & Gray
 Center: 11 ½ in.
 Side: 4 ¾ in.
 Width: 7 ¼ in.
 Quantity:
 Arc from symbol: no arc.



#16 Gold & Gray
 Center: 12 in.
 Side: 5 ½ in.
 Width: 7 ¼ in.
 Quantity:
 Arc from symbol: no arc



#17 Gold & Gray
 Center: 12 in.
 Side: 3 ¼ in.
 Width: 7 ¼ in.
 Quantity:
 Arc from symbol: 2 ½ in.



#18 Gold & Gray
 Center: 7 ¾ in.
 Side: 3 ¼ in.
 Width: 7 ¼ in.
 Quantity:
 Arc from symbol: no arc.



#19 Gold & Gray
 Center: 12 in.
 Side: 5 ½ in.
 Width: 7 ¼ in.
 Quantity:
 Arc from symbol: no arc.



#20 Gold & Gray
 Center: 12 in.
 Side: 5 ½ in.
 Width: 7 ¼ in.
 Quantity:
 Arc from symbol: no arc.



#21 Gold & Gray
 Center: 12 in.
 Side: 5 ½ in.
 Width: 7 ¼ in.
 Quantity:
 Arc from symbol: no arc.



#22 Gold & Gray
 Center: 12 in.
 Side: 5 ½ in.
 Width: 7 ¼ in.
 Quantity:
 Arc from symbol: no arc.



#23 Gold & Gray
 Center: 12 in.
 Side: 5 ½ in.
 Width: 7 ¼ in.
 Quantity:
 Arc from symbol: no arc.



#24 Gold & Gray
 Center: 12 in.
 Side: 5 ½ in.
 Width: 7 ¼ in.
 Quantity:
 Arc from symbol: no arc.



#25 Gold & Gray
 Center: 12 in.
 Side: 5 in.
 Width: 7 ¼ in.
 Quantity:
 Arc from symbol: no arc.



#26 Gold & Gray
 Center: 11 ¼ in.
 Side: 2 ¼ in.
 Width: 7 ¼ in.
 Quantity:
 Arc from symbol: 2 ½ in.



#27 Gold & Gray
 Center: 11 in.
 Side: 2 ¼ in.
 Width: 7 ¼"
 Quantity:
 Arc from symbol: 2 ½ in.



#28 Gold & Gray
 Center: 6 ¾ in.
 Side: 2 ¼ in.
 Width: 7 ¼ in.
 Quantity:
 Arc from symbol: no arc.



#29 Gold & Gray
 Center: 11 in.
 Side: 1 ¾ in.
 Width: 7 ¼"
 Quantity:
 Arc from symbol: 2 ½ in.



#30 Gold & Gray
 Center: 11 in.
 Side: 1 ¾ in.
 Width: 7 ¼"
 Quantity:
 Arc from symbol: 2 ½ in.



#31 Gold & Gray
Center: 11 in.
Side: 1 $\frac{3}{4}$ in.
Width: 7 $\frac{1}{4}$ "
Quantity:
Arc from symbol: 2 $\frac{1}{2}$ in.



#32 Gold & Gray
Center: 11 in.
Side: 1 $\frac{3}{4}$ in.
Width: 7 $\frac{1}{4}$ "
Quantity:
Arc from symbol: 2 $\frac{1}{2}$ in.



#33 Gold & Gray
Center: 9 $\frac{1}{4}$ in.
Side: 2 $\frac{1}{2}$ in.
Width: 7 $\frac{1}{4}$ in.
Quantity:
Arc from symbol: no arc.



#34 Gold & Gray
Center: 8 $\frac{1}{2}$ in.
Side: 1 $\frac{3}{4}$ in.
Width: 7 $\frac{1}{4}$ in.
Quantity:
Arc from symbol: no arc.



#35 Gold & Gray
 Center: 10 $\frac{3}{4}$ in.
 Side: 1 $\frac{3}{4}$ in.
 Width: 7 $\frac{1}{4}$ "
 Quantity:
 Arc from symbol: 2 $\frac{1}{2}$ in.



#36 Gold & Gray
 Center: 6 in.
 Side: 1 $\frac{1}{2}$ in.
 Width: 7 $\frac{1}{4}$ in.
 Quantity:
 Arc from symbol: no arc.



#39 Gold & Gray
 Center: 4 $\frac{1}{4}$ in.
 Side: 1 $\frac{1}{2}$ in.
 Width: 7 $\frac{1}{4}$ in.
 Quantity:
 Arc from symbol: no arc.

23 Company Tabs

- a. Style:** ARC shaped 3/4" wide and 3-1/2" long across top and 3" long across bottom; 1/8" trim.
- b. Color:** Light blue with white embroidered letters and trim.
- c. Lettering:** A Company, B Company, C Company, D Company, E Company, F Company, G Company, H Company, I Company, K Company, L Company, M Company, N Company, O Company, P Company, R Company, S Company, T Company, V Company, Band Company, Palmetto Company.
- d. Packaging:** Individually packaged with SKU on outside.



24 Device, S. C.

- a. **Style:** S. C. with periods
- b. **Material:** Hard drawn brass 3/4 of an inch long, 7/16 of an inch wide, 1/16 of an thick.
- c. **Design:** Similar to standard U. S. Army
- d. **Finish:** Gold plated
- e. **Fastener:** Two clutch fasteners on each device
- f. **Packaging:** Individually packaged with clear front so item is viewable from outside of package with built-in hangtag and SKU on outside of package; 50 per box.



25 Epaulets

All Epaulets to be individually packaged with clear front so item is viewable from outside of package with built-in hangtag and SKU on outside of package; 25 per box.

25-1 Epaulets, Male

- a. **Material:** 22 oz. Black N.O cloth fortified with buck ram
- b. **Style:** Doubled material stitched together without clutch fasteners.
- c. **Size:** approximately 4 ½ inches long by 2 ¼ inches wide.
- d. **Packing:** Each pair must be wrapped in plastic.

25-2 Epaulets, Female

- a. **All specifications same as Male**
- b. **Size:** approximately 3 ½ inches long by 2 ¼ inches wide



All insignia to be individually packaged with clear front so item is viewable from outside of package with built-in hangtag and SKU on outside of package; 50 per box.

26-1 Insignia, Cannon Crew

- a. Style:** Cross Cannons with metal prongs and clutches on back.
- b. Color:** Silver
- c. Size:** 1-1/2" long cannons - 3/4" wide from cannon to cannon. Width of cannons top should be 1/8" and bottom 1/4".



26-2 Insignia, Metal, Miniature

- a. Style:** Coiled rope pattern (Officer Ranks)
- b. Material:** White Metal
- c. Design:** Die struck or die cast, miniature size
- d. Finish:** Nickel silver
- e. Fastener:** One clutch fastener on Second Lieutenant,
G all other ranks- 2 clutch fasteners on each device.
- f. Size:** Disc: 15/32 of an inch in diameter. Other ranks approximately 3/4" wide.
(White Metal, 3/64 of an inch thick).
Diamonds: 13/16 of an inch in height, 9/16 of an inch width.
Cross Rifles: Height .1875 x .406 width or approximately 3/16 x 13/32.
- g. Assembly:** When two or three disc or diamonds are used,

they are to be mounted on white metal bar, silver finish, flushed together. Diamonds to be mounted the short way of the diamond. Cross Rifles hang from White Metal Bar.

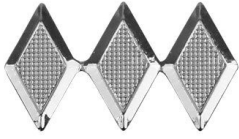
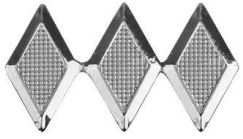


26-3 Lyre, Band Insignia

- a. **Material:** White metal, 3/64 of an inch thick
- b. **Size:** Eleven-sixteenth of an inch in height and not over 4 5/8 of an inch in width for widest part.
- c. **Finish:** Nickel plated
- d. **Fasteners:** Two clutches fasteners on each lyre



26-4 Insignia Cadet Collar Rank, Colonel



Insignia Cadet Collar Rank, Lieutenant Colonel (photo only)



Insignia Cadet Collar Rank, Major (photo only)



Insignia Cadet Collar Rank, Captain (photo only)



Insignia Cadet Collar Rank, First Lieutenant (photo only)



Insignia Cadet Collar Rank, Second Lieutenant (photo only)



27 Letter, company:

- a. **Style:** Die & tool, beveled edge, block letters
Companies: A, B, C, D, E, F, G, H, I,
K, L, M, N, O, P, R, S, T, V.
- b. **Material:** White metal, 3/64 of an inch thick, 18% nickel
- c. **Size:** Seven-Eighth of an inch in height and not over
1/2 of an inch in width, for widest letter
- d. **Finish:** Nickel Silver
- e. **Fastener:** Two clutch fasteners on each letter

f. Packaging: Individually packaged with clear front so item is viewable from outside of package with built-in hangtag and SKU on outside of package; 50 per box.



28 Name Tags, Plastic

Black with embedded metal backing and 1" wide.
Length determined by length of name. White

lettering and edges. Individually wrapped with SKU on outside.



29 Name Tape

29-1 Name Tape OCP

- a. **Style:** 1" wide tape with cadets last name embroidered in 3/4" letters. Length of tape is determined by length of name. Tapes are ordered in pairs; two tapes per person.
- b. **Color:** OCP Camouflage with black embroidered name.
- c. **Back:** Velcro
- d. **Packaging:** Two per name wrapped together with SKU on outside.



29-2 Name Tape Field Jacket

- a. **Style:** 1" wide tape with cadets last name embroidered in 3/4" white letters. Length of tape is determined by length of name. One tape per person.
- b. **Color:** Light blue fabric with white embroidered name.
- c. **Packaging:** Two per name wrapped together with SKU on outside.



30 Numeral, Class

Seniors- “1” Juniors- “2” Sophomores- “3” Freshmen- “4”

- a. **Style:** Die tool, beveled edge
- b. **Material:** White metal, 3/64 of an inch thick. 18% nickel
- c. **Size:** 7/8 of an inch in height and not over ½ of an inch in width, for widest figure.
- d. **Finish:** Nickel silver
- e. **Fastener:** Two clutch fasteners on each numerals
- f. **Packaging:** Individually packaged with clear front so item is viewable from outside of package with built-in hangtag and SKU on outside of package; 50 per box.



31 Shoulder Boards

Shoulder boards should be packaged in pairs with clear front so item is viewable from outside of package with built-in hangtag and SKU on outside of package; 50 per box.

a. Male Shoulder Boards

- a. **Material:** Wool
- b. **Color:** Light Blue with white class stripe and white backing and white leather strap.
- c. **Size:** 5-1/4” from back to point 2-1/2” wide. Bottom side should have a leather strap 4-1/2 “ long with snap on fastener.
- d. **Stripes as follows:**
 - 1. Seniors-Three Stripes
 - 2. Juniors-Two Stripes
 - 3. Sophomores-One Stripes
 - 4. Freshmen-No stripe

b. Female Shoulder Boards

- a. Size:** 4-1/2 “ from back to point 2-1/2” wide bottom side should have a leather strap 4-1/4” long with snap on fastener. All other Female shoulder boards specifications are the same as the male.



32 Sleeve Bar, Brass, Honor Company Bar

- a. Style:** Plain
- b. Material:** Hard drawn brass
- c. Design:** Smooth and solid
- d. Finish:** Gold plated
- e. Size:** 1-1/2” long, 3/8 of an inch wide.
- f. Fastener:** Clutch
- g. Packaging:** Individually packaged with clear front so item is viewable from outside of package with built-in hangtag and SKU on outside of package; 50 per box.



33. Stars, Distinguished Scholarship Device, Gold

- a. Style:** Five-pointed star, raised in center, plain.
- b. Material:** Hard drawn brass. Approximately 5/64 of an inch thick.
- c. Design:** Die struck, smooth and solid
- d. Finish:** Gold plated, standard acid test
- e. Size:** Approximately one-inch diameter
- f. Fastener:** Clutch
- g. Packaging:** Individually packaged with clear front so item is viewable from outside of package with built-in hangtag and SKU on outside of package; 50 per box.



34. Collar Stay



- g. Packaging:** Individually packaged with clear front so item is viewable from outside of package with built-in hangtag and SKU on outside of package; 100 per box.



35. ID Tag Chain

Individually packaged with clear front so item is viewable from outside of package with built-in hangtag and SKU on outside of package; 100 per box.



Appendix D
Lot 4
Cap
Specifications
Updated January 24, 2024

36 Cap, Dress White

- a. Material:** White caplite vinyl (perma gear).
- b. Style:** Height in front to be approximately four inches from visor, crown measure 10-1/2 inches from front to rear and 10 inches from side to side when finished. Measurements of other sizes to be in proportion.
- c. Frame:** Visor- To be black vinyl plastic top with bottom pyroxylin coated green.
- d. Front Stayer Band:** For absolute uniformity and non-peeling, the construction shall be a one piece molded visor,

front band stayer of solid black polyallomer or approved equal. Emblem slots and assembly holes to be performed, visor to be a sharp droop and measure 1-7/8” in the inner band 2-1/8” extruded “poly” perforated with prepunched buttonholes and attached with brass rivets.
- e. Size:** The size to be on cap sweatband as well as on container.
- f. Sweatband:** Two size adjustable (self-adjusting sweatband) 27 oz. Anti-migratory non-toxic cloth backed vinyl, sewn on the outside of inner band and turned for cushioned effect to provide maximum comfort. Top edge to be finished and size label attached. Each cap to effectively cover two head sizes. In six sizes.
- | <u>Cap Size</u> | <u>Actual Head Size in inches</u> |
|-----------------|-----------------------------------|
| 6-5/8 - 6-3/4 | 20-3/4 - 21-3/8 |
| 6-7/8 - 7 | 21-1/2 - 22-1/8 |
| 7-1/8 - 7-1/4 | 22-1/4 - 22-7/8 |
| 7-3/8 - 7-1/2 | 23 - 23-5/8 |
| 7-5/8 - 7-3/4 | 23-3/4 - 24-3/8 |
- g. Cap Cover:** Will include top, three-piece projection, side band, tip lining (white acetate), sweat shield (.088 gauge clear vinyl) and a pocket for individual name card. Seams will be lock stitched, 10 to 12 stitches to the inch.
- h. Grommet:** Will be a soft grommet of extruded plastic tubing cut to exact size to fit properly within cap cover.
- i. Eyelets:** Each cap provided with a front badge eyelet and two ventilating eyelets on each side.
- j. Front Strap Button:** 5/8” imitation leather sliding front strap. Buttons to be Citadel screw back.
- k. Packing:** Individually packaged with SKU and size on outside. Packed sixteen to a box with size on outside of box.



37 Cap, Dress Black

- a. Material:** Black Elastique
- b. Style:** Height in front to be approximately four inches from visor, crown to measure 10-1/2 inches from front to rear and 10 inches from side to side when finished. Measurements of other sizes to be in proportion.
- c. Frame:** Visor- To be black vinyl plastic top with bottom pyroxylin coated green.
- d. Front Stayer Band:** For absolute uniformity and non-peeling, the construction shall be a one piece molded visor,

front band and stayer of solid black polyallomer or approved equal. Emblem slots and assembly holes to be preformed, visor to be a sharp droop and measure 1-7/8", in the inner band 2-1/8" extruded "poly" perforated with prepunched buttonholes and attached with brass rivets.
- e. Size:** The size to be on cap sweatband as well as on container.
- f. Sweatband:** Two size adjustable (self-adjusting sweatband) 27 oz. Anti-migratory non-toxic cloth backed vinyl, sewn on the outside of inner band and turned for cushioned effect to provide maximum comfort. Top edge to be finished and size label attached. Each cap to effectively cover two head sizes. In six sizes:

<u>Cap Size</u>	<u>Actual Head Size in Inches</u>
6-5/8 - 6-3/4	20-3/4 - 21-3/8
6-7/8 - 7	21-1/2 - 22-1/8
7-1/8 - 7-1/4	22-1/4 - 22-7/8
7-3/8 - 7-1/2	23 - 23-5/8
7-5/8 - 7-3/4	23-3/4 - 24-3/8

- g. Cap Cover:** Will include top, three-piece projection side band, tip lining (white acetate), sweat shield (.088 gauge clear vinyl) and a pocket for individual name card. Seams will be lock stitched, 10 to 12 stitches to the inch.
- h. Grommet:** Will be a soft grommet of extruded plastic tubing cut to exact size to fit properly within the cap cover.
- i. Eyelets:** Each cap provided with a front badge eyelet and two ventilating eyelets on each side.
- j. Front Strap Buttons:** 5/8" imitation leather sliding front strap. Buttons to be Citadel screw back.
- k. Packing:** Individually packaged with SKU and size on outside. Packed sixteen to a box with size on outside of box.



38 Cover, Cap, Rain

- a. **Style:** Pull over, without visor protector
- b. **Material:** Nylon Viscose, cravatted with rayon and elastic binding. Waterproof material required.
- c. **Color:** Jet Black
- d. **Packaging:** Individually packaged with SKU on the outside. Packed 1,000 to a box.



39 Shako Complete with Device, Pom Pom, Chain and Buttons

- a. **Style:** West Point type. Frame shall be Baylstron plastic molded from one piece. Acrylonitrile ASTM standard D-638-58 T to be 3800 lbs. Per square inch. Drop weight test strength at + 70 degrees Fahrenheit is to be 48 foot lbs. and at -20 degrees Fahrenheit is to be 18 foot lbs.
- b. **Material:** As selected 9-1/2 to 10 oz., 85% wool 15% nylon. Broadcloth, dyed black.
- c. **Visor:** Consists of one piece solid molded visor. Bottom pyroxlin-coated green lining. Binding of (mylar) laminated composite material (gold plastic) to match insignia, chain, etc.
- d. **Crown:** .014 gauge - black plastic stitched to side material
- e. **Bands:** Two and one half ounce black vinyl plastic. Top band 3/4” strip stitched around top of hat. Bottom 7/8” strip stitched around lower edge of hat over cradle and visor.
- f. **Cradle:** Made of supported plastic with cotton impregnated elastic back; fashioned into scalloped sweat band, stitched to the outside frame of the hat and turned in and laced at the scalloped points to form cradle.
- g. **Chin Strap:** Clarino, black patent finish; shall be made in two section, each 3/4 “ wide. The ends of each strap shall be provided with a 3/4 pointed riveted loop. The assembled strap is draped around the back of the hat and attached by a black hook stitched to the back of the hat. One end of each section shall be provided with a 7/32 aperture.
- h. **Chain:** 20-X gold anodized, minimum 11-1/2 inches long lacquered; attached to front of hat and held into place by means of the buttons.
- i. **Insignia:** Shako, Device-special Citadel Seal; approximately 4” in height with screw back fastener, finished to shade of chain. (Shako Device will be supplied by The Citadel).
- j. **Button:** Thirty-six ligne shell South Carolina State Seal with prong back attachments for holding chain and chin strap to hat (equal to Waterbury No. 16196). Finished to shade of chain.
- k. **Vents:** Black Japanned; inserted into each side of the hat for ventilation.
- l. **Attachment:** Metal holder for holding pom pom or plume is inserted into the crown of the hat at the center front.
- m. **Size:** Print size on shako as well as on container.

Schedule of sizes

<u>Mold size</u>		
<u>Number</u>	<u>Head Size</u>	<u>Actual Head Size</u>
318	8 - 7-7/8	24-1/2 - 25-1/8
278	7-3/4 - 7-5/8	23-3/4 - 24- 3/8
258	7-1/2 - 7-3/8	23 - 23- 5/8
238	7-1/4 - 7-1/8	22-1/4 - 22-7/8
218	7 - 6-7/8	21-1/2 - 22-1/8

178 6-3/4 - 6-5/8

20-5/8 - 21-3/8

n. Pom Pom: Shall be made of wool, over hardwood shape for form, full bodies, neatly trimmed, and shall be of uniform shape. Base shall be formed of spring brass wire and brass cup to properly fit sockets on top of shako. Finished pom pom, exclusive of stem, shall be six inches wool, seven inches overall.

o. Packaging: Individually boxed with size and SKU on the outside. Shipped 18 per box.



40 Shako, Plume

- a. Material:** Shall be made of iridescent black long Cocque feathers mounted to an underbody or base, and formed into a flowing Cocque Plume. Base shall be formed of spring brass wire, brass cup to properly fit the top of the crown of the shako.
- b. Size:** Finished plume shall be approximately 12 inches in height.
- c. Packaging:** Each plume shall be placed inside a tube that is labeled with SKU on the outside. Packaged 50 to a box.



41-1 Cap, Overseas with Black Piping

- a. Material:** Black Elastique Foamback
- b. Color:** Black with black nylon piping
- c. Style:** USA Standard
- d. Size:** The size to be on cap sweatband.
Individual Sizes
6-1/2, 6-5/8, 6-3/4, 6-7/8, 7, 7-1/8, 7-1/4, 7-3/8, 7-1/2, 7-5/8, 7-3/4
- d. Sweat Band:** Black cloth bonded to adhesive backing, double stitched, 1" wide.
- f. Packing:** Individually packed in a poly bag with the size **and SKU** on the bag. Packed 24 or 30 per box.



41-2 Cap, Overseas with White Piping

a. Material: Black Elastique Foamback

b. Color: Black with white nylon piping

c. Style: USA standard

d. Size: The size to be on cap sweatband.

Individual Sizes

6-1/2, 6-5/8, 6-3/4, 6-7/8, 7, 7-1/8, 7-1/4, 7-3/8, 7-1/2, 7-5/8, 7-3/4

e. Sweatband: Black cloth bonded to adhesive backing double stitched, 1" wide.

f. Packing: Individually packed in a poly bag with the size **and SKU** on the bag. Packed 24 or 30 per box.



42-2 Cap Strap, Black

Three-ounce cowhide, black patent finish 1/2" wide. The strap shall be made in two sections so that it may be adjusted. There shall be two pointed slides stitched firmly to the inner ends of the strap. The two outer ends of the strap shall be provided with brass eyelets. **Individually packaged with the SKU on the outside.**



42-2 Cap Strap, Gold

To be best grade 1/2 of an inch gilt wire lace, or synthetic gold and lace, doubled, leather backed,

1/2 of an wide. The strap should be made in two sections, so that it can be adjusted under the chin,

The two outer ends of the strap shall be provided with brass eyelets. There shall be two pointed slides stitched firmly to the inner ends of the strap, the front of each to be approximately 2 inches from the center of the bottom. **Individually packaged with the SKU on the outside.**



Appendix E
LOT 5
GLOVES
SPECIFICATIONS
Updated January 24, 2024

43 Non-Slip Gloves, Drill, White

- a. Style:** Snap-on with metal snaps
- b. Grip:** Rubberized dots steady spread on the palms and fingers for a non-slip grip.
- c. Material:** No. 1071, or equal, extra heavy cotton fabric with a special constructed reinforced welt to secure the snaps. The band at the top is made by turning under and stitching the fabric.
- d. Size:** Small, Medium, Large and X- Large.
(size label stitched in each glove)
- e. Packing:** Must be packed in 12" long, 7" wide and 2" deep boxes, one dozen per box. **Shipped in boxes containing 25 dozen.** Each pair in an individual plastic bag with size **and SKU** on each bag.



44 Gloves, Knit

- a. Style:** #590 Plain knit gloves
- b. Material:** 100% Acrylic
- c. Color:** Navy
- d. Size:** One size fits all
- e. Packing:** Individually packaged with SKU on outside. One dozen per box.



45 Gloves, Leather, Lined

- a. Style:** Standard military pattern. Pull on. Style No. 1816
- b. Material:** Top grain cowhide
- c. Dye:** The leather shall be dyed in such a manner that the dye will not bleed.
- d. Color:** Black
- e. Ribs:** Straight
- f. Stitching:** Best quality glove makers silk thread.
- g. Lining:** 50% Wool - 50% Acrylic
- h. Packing:** Must be individually wrapped with size and SKU on outside. Packed in boxes one dozen per box. Twenty-five dozen per box for shipping.
- i. Sizes:** Small, medium large and extra-large.
(And some special orders)



APPENDIX F

LOT 6

NECKWEAR

SPECIFICATIONS

Updated January 19, 2024

46 Muffler, Gray

12 inches wide, 48 inches long. 2/20 size yarn,
64 inches quality, gray, all wool.

Must be **individually packaged with SKU on outside and** packed in boxes one
(1) dozen per box.



Appendix G

Lot 7

BELTS

Updated January 24, 2024

47 Belt, Frog (only)

- a. Style:** Tear drop pattern
- b. Size:** 6-1/2 inches long by 2-7/8 inches wide; bottom straight cross.
- c. Material:** Black leather
- d. Slot:** To fit 1-3/4 inch belt
- e. Sword Slot:** On face of frog to fit Citadel regulations sword
- f. Stitching:** No. 30 waxed black harness thread, stitching to run around edges of frog. Belt loop and sword stitched with same thread.
- g. Packing:** Individually poly wrapped **with SKU on the outside. 100 per case.**



48 Belt, Leather (Buckle separate)

- a. Style:** Garrison type belt
- b. Width:** 1-3/4 inches
- c. Length:** Two sizes medium length (38") long length (42")
- d. Material:** Black solid leather, top grain bridle cowhide
- e. Creasing:** Harness crease on each side of the belt face, spaced 1/8 of an inch from edges.
- f. Hook Loop:** Metal belt plate loop stitched to left end of belt
- g. Buckle Guard:** 4-1/2" long guard attached to extend from the hook loop. To be rounded at end. Leather and width same as belt.
- h. Belt Loops:** Two belt loops per belt
- i. Packing:** Belts are **individually boxed with size and SKU on outside. Shipped 40 per box.**



49 Belt, Reflective

- a. Style:** Reflective (Re-Flex) adjustable slide belt with male and female snap in buckle.
- b. Material:** Vinyl 3M Scotchlite reflective material
- c. Color:** White (line 38)
- d. Size:** One size fits all
- e. Packaging:** Individually packaged with SKU on outside. 100 per box.



Re-flex Extended Elastic Belt

☆☆☆☆☆ 0 Reviews

The Re-Flex Extended Elastic Belt with buckle is made with breathable stretch elastic for comfort and laminated with 3M™ Scotchlite™ Reflective material that returns 500 candlepower reflectivity.

- Adjusts from 29" to 52"
- Can stretch up to 9 feet
- Barry Compliant – Made in the USA



50 Belt, Web (complete with buckle)

- a. Style:** As used by the U.S. Army
- b. Size:** Two sizes, medium length (40") and long lengths (48")
- c. Material:** Heavy woven cotton webbing, 1-1/4 inches wide
- d. Color:** Black
- e. Buckle:** Solid Brass
- f. Type:** Sliding bar lock
- g. Tips:** Solid brass clamped to end of belt
- h. Pack:** Wrap in rolls so that buckle will not be scarred in shipment **with SKU on the outside**. Pack belt with buckles, one dozen per box.



51 Webbing, white

- a. Style:** West Point
- b. Material:** Extra heavy, hard twisted cotton yarn, 1.4 oz., bleach and sulfurized.
- c. Width:** Two inches
- d. Color:** White
- e. Pattern:** Weave of the web to be the same pattern as used by West Point. Packed 15 yds. To the roll, on one continuous piece.
- f. Packing:** Individually wrap with SKU on outside. 36 per box..



Appendix H

Lot 8

Metal Accessory Items

Specifications

Updated January 24, 2024

52 Plate, Breast (for white web cross belt)

- a. Breast Plate (#1749), Polished Cartridge Brass 70/30 C26000 H01 (quarter-hard), 0.05000" thickness
- b. Breast Plate Dimensions: 3-3/16" x 2-1/2", corner notches 3/8" length, legs on corner 7/8"
- c. Packing: **individually wrapped with SKU on outside. 200 ea. per case**



53 Plate, Waist (for white web cross belt)

- a. Waist Plate with Catch (#1750), Polished Cartridge Brass 70/30 C26000 H01 (quarter-hard), 0.08000" thickness
- b. Waist Plate Dimensions: 3" x 2-3/16", three rounded slots: width 3/16" x length 1-15/16", tongue 1-1/4" x 3/4" bent at 45 degree angle
- c. Catch Dimensions: 2-3/16" x 1-5/8", three rounded slots: width 3/16" x length 1-15/16", bottom slot 1-1/4" x 1/8"
- d. Packing: **individually wrapped with SKU on outside; 200 ea. per case**



54 Buckle for Leather Sword Belt

- a. Buckle, Sword, Gilt and Silver (#1504), Cartridge Brass 70/30 C26000, 0.06200" thickness
- b. Buckle Dimensions: 2-15/16" x 2", tongue 1-11/16" x 3/4" bent at 45 degree angle
- c. Two-tone plating, Int. Rhodium with 3 mils gold plating
- d. French Fastener with slide and rectangular ring attachment
- e. Individually packaged with a clear front so that item is clearly visible from outside with built-in hangtag and SKU on back of package.



55 Device, Black and White Cap

- a. Material:** Hard drawn yellow brass, approximately 5/64 of an inch thick.
- b. Design:** Official Citadel Seal, die struck, cut and shaped
- c. Finish:** Hard drawn yellow brass
- d. Fastener:** Screw post with thumb and soldered to back of device. Sharpened prongs soldered to back of device to prevent device from slipping, distance from top of screw to top of emblem is 7/8 of an inch.

(The device is to come up even with the top of the cap)

- e. Packaging:** Individually packaged with a clear front so that item is clearly visible from outside with built-in hangtag and SKU on back of package. 300 per case.



56 Device, Cap, Miniature

- a. Material:** Hard drawn yellow brass, approximately 5/64 of an inch thick.
- b. Design:** Official Citadel Seal, die struck, cut and shaped. Clutch fastener.
- c. Finish:** Hard drawn yellow brass
- d. Size:** Same as for Black and White caps except smaller, size 1-3/16 by 3/4 inch wide.
- e. Packaging:** Individually packaged with a clear front so that item is clearly visible from outside with built-in hangtag and SKU on back of package. 300 per case.



57 Shako, Device

- a. Material:** Hard drawn yellow brass, approximately 5/64 of an inch thick.
- b. Design:** Official Citadel Seal, die struck, cut and shaped. Screw back fastener.
- c. Finish:** Hard drawn yellow brass
- d. Size:** Same as for Black and White caps except larger, approximately 4" in height.

e. Packaging: Individually packaged with a clear front so that item is clearly visible from outside with built-in hangtag and SKU on back of package. 300 per case.



58 Insignia, Collar Rank – all insignia to be individually packaged with a clear front so that item is viewable from outside of package with built-in hangtag and SKU on back of package.

- a. Sergeant Major #1541, Nickel Silver material, 0.05000" thickness, .312 clutch pin fastener. No electroplating finishes
 - i. Dimensions: 1-1/4" x 11/16" with 3/16" star



- b. Master Sergeant #1542, Nickel Silver material, 0.05000" thickness, .312 clutch pin fastener. No electroplating finishes
 - i. Dimensions: 1-1/4" x 11/16"



- c. First Sergeant #1543, Nickel Silver material, 0.05000" thickness, .312 clutch pin fastener. No electroplating finishes
 - i. Dimensions: 1-1/4" x 11/16" with 3/16" diamond



- d. Staff Sergeant #1544, Nickel Silver material, 0.05000" thickness, .312 clutch pin fastener. No electroplating finishes
 - i. Dimensions: 15/16" x 11/16"



- e. Sergeant First Class #1545, Nickel Silver material, 0.05000" thickness, .312 clutch pin fastener. No electroplating finishes
i. Dimensions: 15/16" x 11/16"



- f. Sergeant #1546, Nickel Silver material, 0.05000" thickness, .312 clutch pin fastener. No electroplating finishes
i. Dimensions: 5/8" x 11/16"



- g. Corporal #1549, Nickel Silver material, 0.05000" thickness, .312 clutch pin fastener. No electroplating finishes
i. Dimensions: 1/2" x 11/16"



- h. Master Sergeant Supply #6059, Nickel Silver material, 0.05000" thickness, .312 clutch pin fastener. No electroplating finishes
i. Dimensions: 1-1/8" x 11/16"



- i. Regimental Sergeant Major #7451, Nickel Silver material, 0.05000" thickness, .312 clutch pin fastener. No electroplating finishes
 - i. Dimensions: 1-1/4" x 11/16" with 3/16" star - custom fabricated wreath



Except as provided herein, all terms and conditions of the Solicitation referenced above remain unchanged and in full force and effect.