

ANNEX F- Blazer

A. Blazer

- 1. Authorization for Wear:** The Citadel Blazer uniform is a privilege for C4 and C3 cadets when granted by the Regimental Commander. The blazer uniform is optional and strictly enforced with regards to its components.
 - i. The blazer uniform is authorized for wear as follows:
 - a. Any C4 Cadet on authorized "Leave" and/or Charleston Pass.
 - b. Any C4 cadet when departing or returning from furlough.
 - c. C3 cadets authorized by the Regimental Commander during 2nd semester on authorized "Leave" and/or "Charleston Pass".
 - d. C3 cadets authorized by the Regimental Commander (during second semester) when departing on or returning from furlough.
 - ii. The blazer uniform is NOT authorized to wear when:
 - a. On campus, with the exception of Coward Hall, to depart and return from authorized leave or special orders, if the order specified the blazer uniform.
 - b. At any Citadel function (sporting events, awards banquets, etc.).
 - c. When representing the Citadel away from campus unless specified and approved on special orders (i.e. academic conferences, religious retreats, drill meets, club trips, etc.).
 - iii. The blazer uniform is only authorized for wear during "Special Orders" when requested by the administration of the attending function/event and approved by the Commandant.
- 2. Composition:**
 - i. Navy blue Blazer-- must be purchased from the tailor shop.
 - a. Single breasted, traditional vented sport coat, it has two Citadel buttons, welt pockets with flaps, notched labels, three Citadel buttons on each sleeve. The Citadel shield sewn on the left breast pocket.
 - b. Civilian blazers are not authorized as a substitute.
 - c. The blazer may be removed when riding in an automobile.
 - d. The Summerall Guard and Junior Sword Arch shield may be sewn on the left breast pocket in place of the Citadel shield and worn by cadets who are members of those clubs.
 - e. Lapel pins are not authorized to be worn on the blazer.
 - ii. Shirt
 - a. Only white or Citadel blue shirt (or open collar blouse for females)—Logo is sold in the Cadet Store/ Tailor Shop.
 - iii. Tie
 - a. Authorized Citadel ties are sold in the Cadet Store/ Gift Shop.
 - b. No female ties, but optional scarf sold in the Tailor Shop is authorized.
 - c. **Authorized ties:**



Yellow w/ Mascot



Pink w/ Mascot



Blue w/ Mascot



Dark Blue
w/ Citadel Seal



Red & Gray Stripes



Blue & Gray Stripes



Red w/ Palmetto
Moon



Tartan

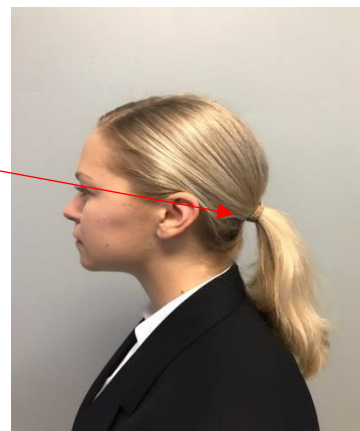
**Blue Stripes****Yellow Bow-tie w/
Mascot****Blue Bow-tie w/
Mascot****Pink Bow-tie w/
Mascot****Tartan Bow-tie**

- iv. Gray dress trousers/skirt-- must be purchased from The Tailor Shop
 - a. Female cadets may wear either the trousers or the issued gray tropical worsted wool skirt with the blazer.
 - b. A black or brown belt is required for male trousers.
- v. Shoes
 - a. Black or brown oxford dress shoes or black loafers without tassels, with gray or black socks.
 - b. Female cadets may wear plain black or brown military pumps with 1 ½ inch heel or plain black or brown flats (without straps or buckles), with neutral or off-black panty hose when wearing a skirt.

- c. The belt and shoe colors must match.
 - d. **Boots of any kind are not authorized.**
- vi. Ball caps will not be worn at any time with the blazer uniform.
- vii. A plain black umbrella may be carried with the blazer uniform.
- viii. The blazer will not be removed in the mess hall or in any public establishment while on general leave.
- ix. The blazer will be worn buttoned.
- x. Female Cadet Hair Guidance in Blazer Uniform:
 - a. If a female cadet in blazer wears her hair down it must be in a ponytail or braid down the center of her head. The ponytail can be secured at the nape of her neck or in the center of the back of her head.
 - b. Hair worn up must be in compliance with female hair guidance in paragraph II, E, 3 of this regulation.
 - c. No other hairstyle is authorized.



Ponytail secured in back of head



Male Blazer with Bow Tie



Female Blazer with Pants



Female Blazer with Skirt

This Page Intentionally Left Blank