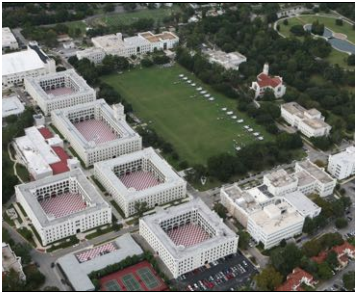


B.S. in Construction Engineering



THE CITADEL
SCHOOL OF ENGINEERING



PROGRAM OVERVIEW: Supportive student-focused, rigorous program providing graduates with quantitative/scientific aptitudes, critical thinking, industry proficiencies, professional business skills, principled leadership, and technical expertise in construction engineering.

COMPETENCIES, KNOWLEDGE AND SKILLS: Students obtain comprehensive perspectives of construction engineering and gain purposeful knowledge of scheduling, estimating, safety, contracts, BIM, equipment, construction methods, and project management.

CURRICULUM SUMMARY: 1.) Frequent on-site field trips, 2.) engagement with construction industry professionals, 3.) summer Internships to gain real world experience encouraged, 4.) active learning classroom environment, 5.) Fundamentals of Engineering Exam preparation, and 6.) innovative engineering-focused curriculum including:

Theme-based Gen. Ed.	10-courses
Mathematics	Calc. 1, Calc. 2, 1-Math/Science elective
Basic Science	Biology +lab, Physics +lab, 2-Chemistry +labs
Accounting	1-course
Surveying	2-courses, 2-labs
Civil Engineering	8-courses
Construction Engineering	17-courses



STUDENTS: Cadets, active duty, veterans, and civilians work together in a uniquely supportive, collaborative, and energetic learning environment to prepare for successful construction engineering careers. Enrollment and photos of student perspectives include:

2019-20	8	graduates
2020-21	8	graduates

2021-22	18	Seniors
	17	Juniors
	16	Sophomores
	20	Freshman



Sam Blumer, C'21
Track and Field



New pole vaulting school record with a jump of 5.00 meters!!



PROGRAM FACULTY: 2 highly-qualified faculty lead the construction engineering program, along with a program director, and support from 12-faculty in civil engineering, 2-faculty in engineering leadership & project management, and 1-faculty in mechanical engineering.



Dr. Mostafa Batouli, PMP
Assistant Professor
Constructability, System-of-Systems, Sustainability, Coastal & Infrastructure Resilience



Dr. Rebekah Burke, PE
Assistant Professor
High Performing Buildings, Building Materials, Structural Engineering, Sustainable Engineering



Dr. William J. Davis, PE
Program Director
Field Engineering, Design-Build, Heavy Industrial Construction, Infrastructure PS&E

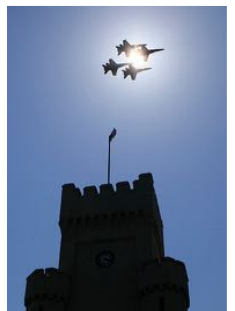
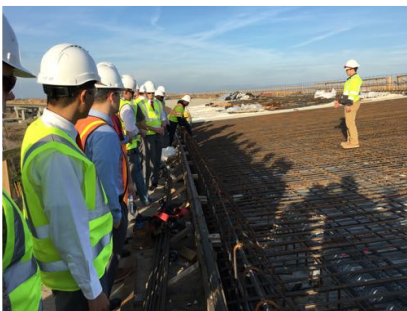
ADVISORY BOARD: 20-member board, meets twice per year, advises faculty on marketing, recruiting, curriculum, student enrichment, equipment/technology needs, enhancements, capital development, scholarships, etc.

Mr. Tim Heichelbech, Advisory Board Chair
Vice President, Director of Operations, Choate Construction
theichelbech@choateco.com

Mr. Mike Kirk, Advisory Board Vice Chair
Senior Vice President, WSP Global Inc.
mike.kirkva@gmail.com

“Take advantage of every opportunity to learn and improve yourself from an experience or another person.”

-Tim Heichelbech



Citadel Construction Engineering Program: Links to more Information

- https://citadel.edu/root/images/school_of_engineering/constructionengineering/construction%20engineering%20brochure.pdf
- <https://sponsored.postandcourier.com/web/citadel/6-reasons-the-citadels-evening-construction-engineering-program-may-be-right-for-you/>
- <https://today.citadel.edu/from-alumnus-to-cadet-on-building-a-career-in-construction-engineering/>

Contact Dr. William J. Davis, P.E., Program Director for more information: jeff.davis@citadel.edu

Bachelor of Science in Construction Engineering

Freshman Year

Fall Semester		
LDRS 101	First Year Seminar	1
FSEM 101	Freshman Seminar	3
FSWI 101	Linked Composition	3
MATH 131	Analytic Geometry & Calculus I (*MPE)	4
BIO 150	Biology for Engineers	3
BIO 151	Biology for Engineers Lab	1
CIVL 103	Introduction to Civil Engineering	1

Academic Credit Hours 16

Spring Semester		
PHYS 221	Physics with Calculus I	3
PHYS 271	Physics with Calculus I Lab	1
RPED 260	Health & Fitness	3
MATH 131	Analytic Geometry & Calculus II	4
CIVL 210	Computer Applications for Civil Engineers	3
CIVL 101	Engineering Drawing	2

Academic Credit Hours 16

Sophomore Year

Fall Semester		
LDRS 202	Principal Leadership in American Gov.	3
	Gen. Ed. - Stand Course I	3
CHEM 151	General Chemistry I	3
CHEM 161	General Chemistry I Lab	1
	Math or Science Elective	3
CIVL 205	Surveying I	3
CIVL 235	Surveying I Lab	1

Academic Credit Hours 17

Spring Semester		
COMM 260	Technical Writing & Communication	3
CHEM 152	General Chemistry II	3
CHEM 162	General Chemistry II Laboratory	1
ACCT 205	Intro. to Managerial Accounting	3
CIVL 202	Statics	3
CIVL 208	Geospatial Representation	1
CIVL 239	Geomatics Lab	3

Academic Credit Hours 17

Junior Year

Fall Semester		
CIVL 304	Mechanics of Materials	3
CIVL 314	Engineering Economy	2
CONE 302	Engr./Constr. Law, Ethics, Safety & Contracts	4
CONE 311	Resource Estimating	3
CONE 320	Engineering Materials & Methods (w/ Lab)	3
CONE 330	Quality Management & Labor Relations	3

Academic Credit Hours 18

Spring Semester		
LDRS 371	Leadership in Organizations	3
	Gen. Ed. - Stand Course II	3
CONE 312	Advanced Estimating	3
CONE 340	Structural Analysis & Design	4
CONE 350	Commercial Construction & Engr. Equipment	3
CONE 360	Soils & Foundations (w/ Lab)	3

Academic Credit Hours 19

Senior Year

Fall Semester		
CIVL 331	Probability & Statistics for CE/CONE	3
CIVL 412	Engr. Practice & Prof. Licensure	1
CONE 412	Engr. Practice & Prof. Licensure for CONE	1
CONE 410	Project Scheduling	3
CONE 415	Project Management & Engr. Admin.	3
CONE 440	Construction Methods & Temp. Str. Design	3
CONE 481	Construction Capstone Design I	3

Academic Credit Hours 17

Spring Semester		
	Gen. Ed. - Stand Course III	3
CONE 450	Facilities Operations & Maintenance (BIM)	3
CONE 460	Mechanical & Electrical Systems (MEP)	3
CONE 470	Practicum in Construction Engineering (w/Lab)	3
CONE 482	Construction Capstone Design II	3

Academic Credit Hours 15